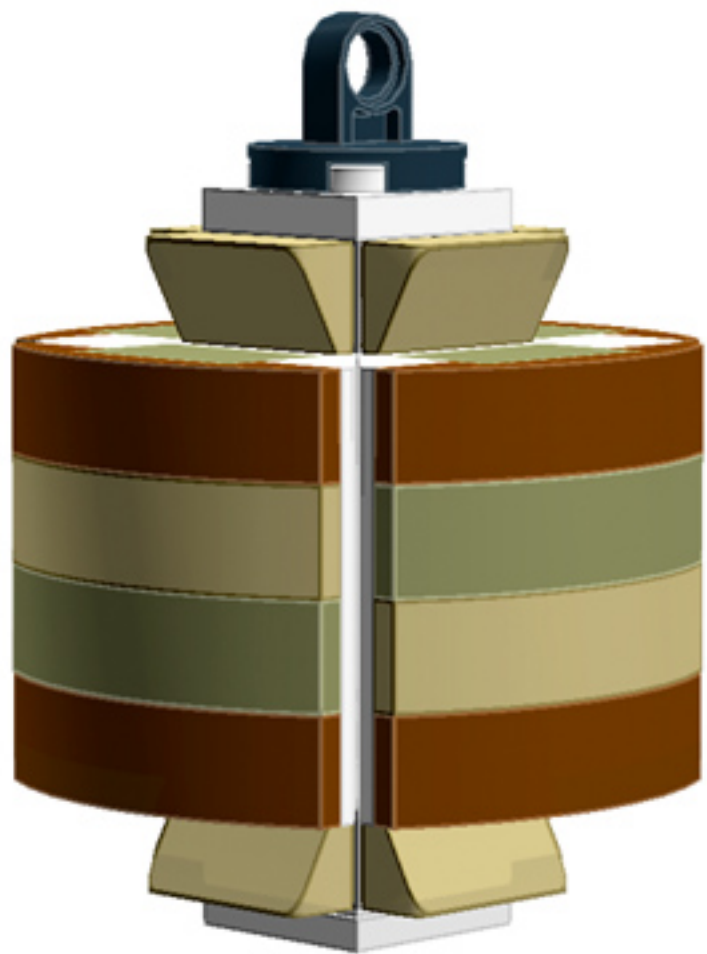


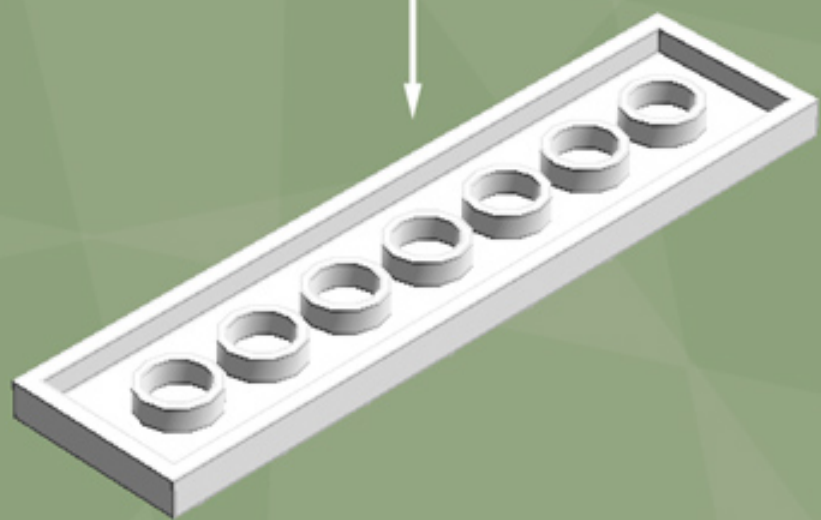
# Lantern Ornament (Forest Chime)

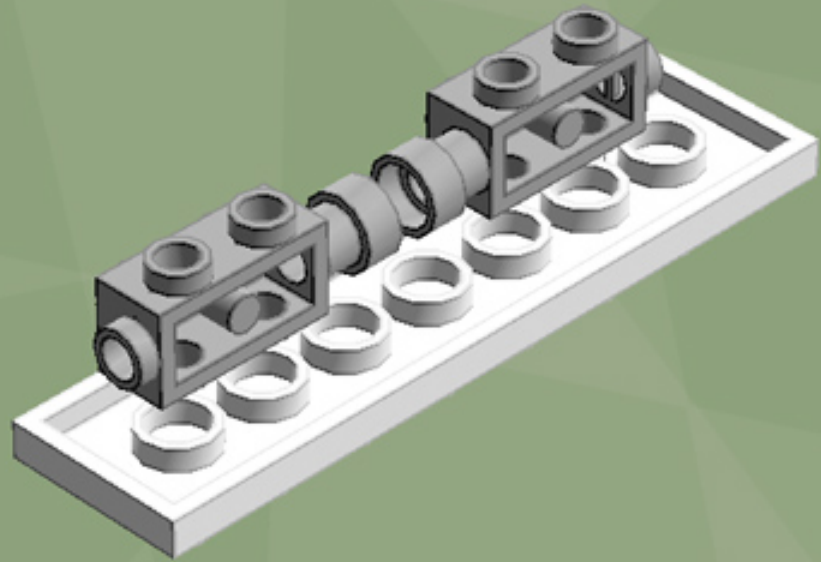
*A LEGO® project by Chris McVeigh*  
[chrismcveigh.com](http://chrismcveigh.com)

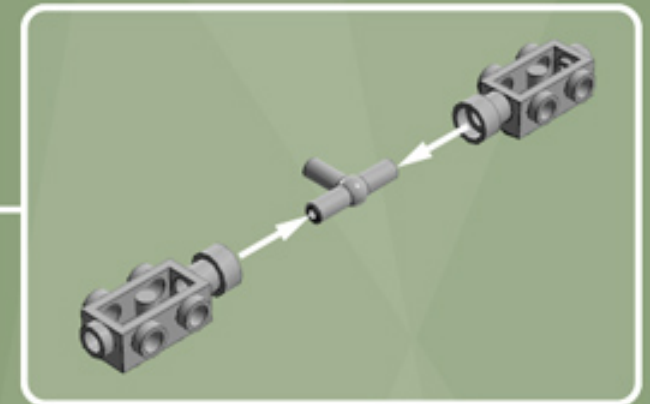
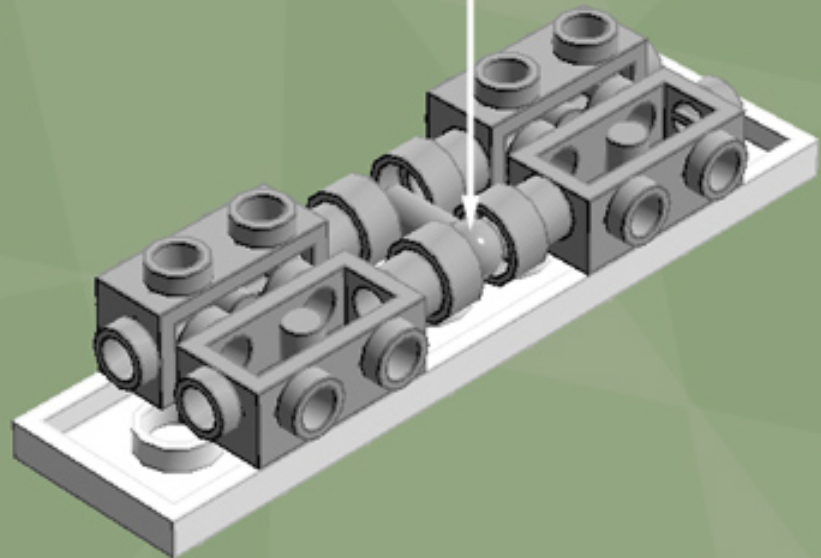


Element ID	Color	Description	Quantity
6010831	Black	Round Plate 2X2 W/Eye	1
4211502	Medium Stone Grey	Motor 1X2X2/3	8
4211508	Medium Stone Grey	T-Piece	2
6024722	Olive Green	Brick 1X2	8
6016482	Olive Green	Plate W. Bow 1X4X2/3	4
4658005	Reddish Brown	Plate W. Bow 1X4X2/3	8
4624086	Brick Yellow	Roof Tile 1X2X2/3, Abs	8
4666611	Brick Yellow	Plate W. Bow 1X4X2/3	4
302201	White	Plate 2X2	1
303401	White	Plate 2X8	2
4658973	White	Roof Tile 4X4/45° Inv.	4
306801	White	Flat Tile 2X2	1



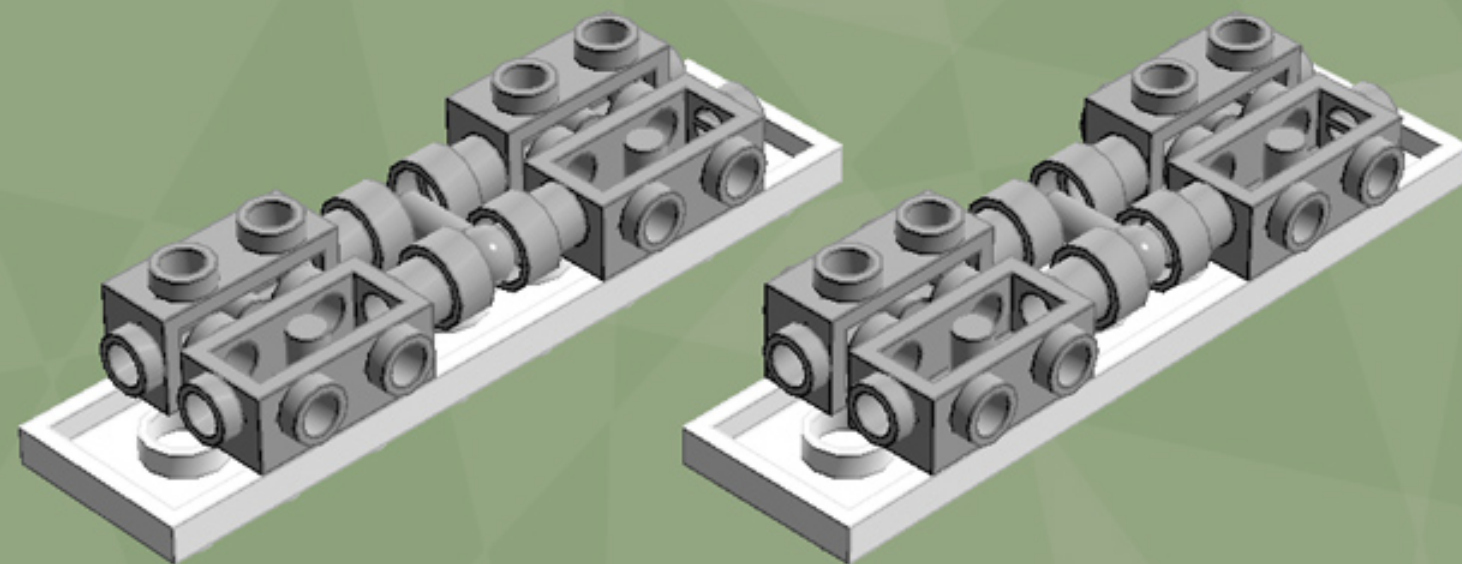


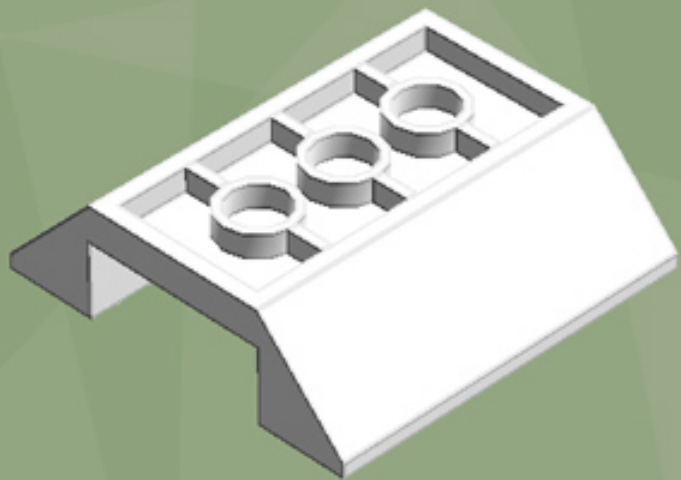


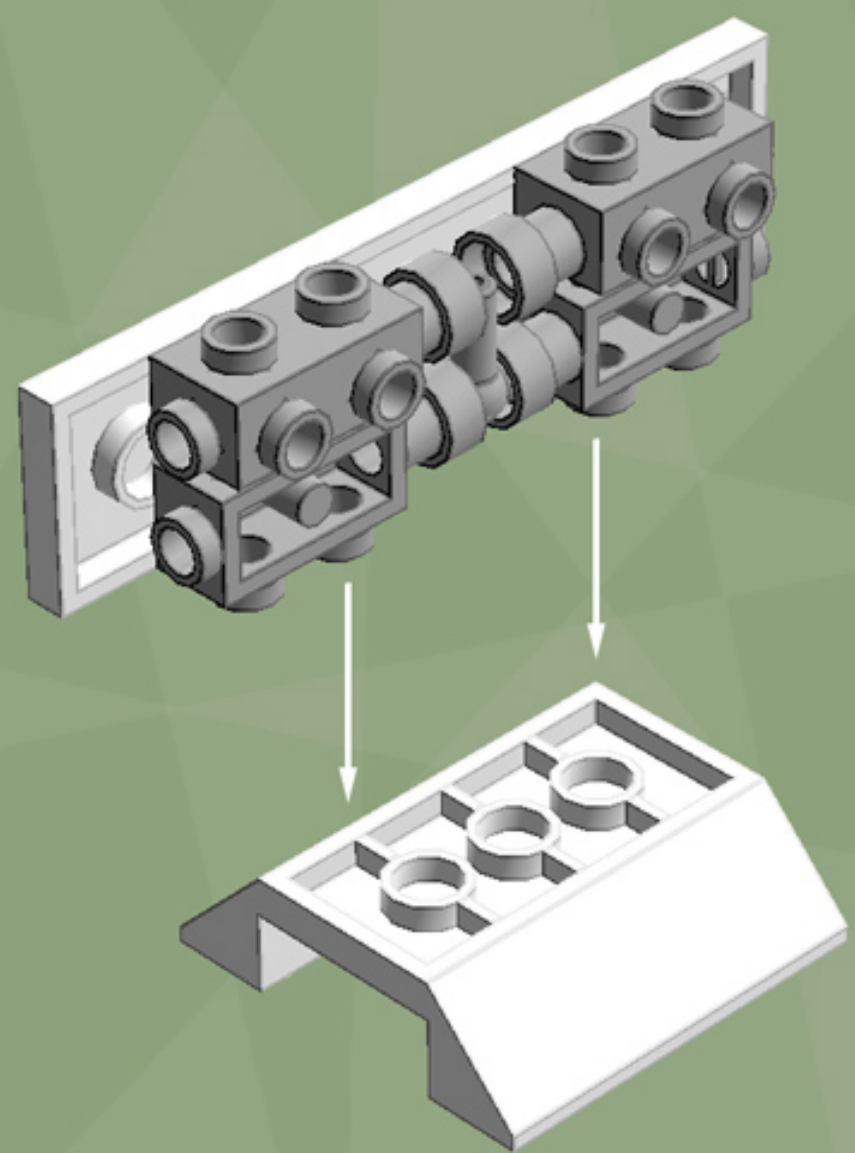




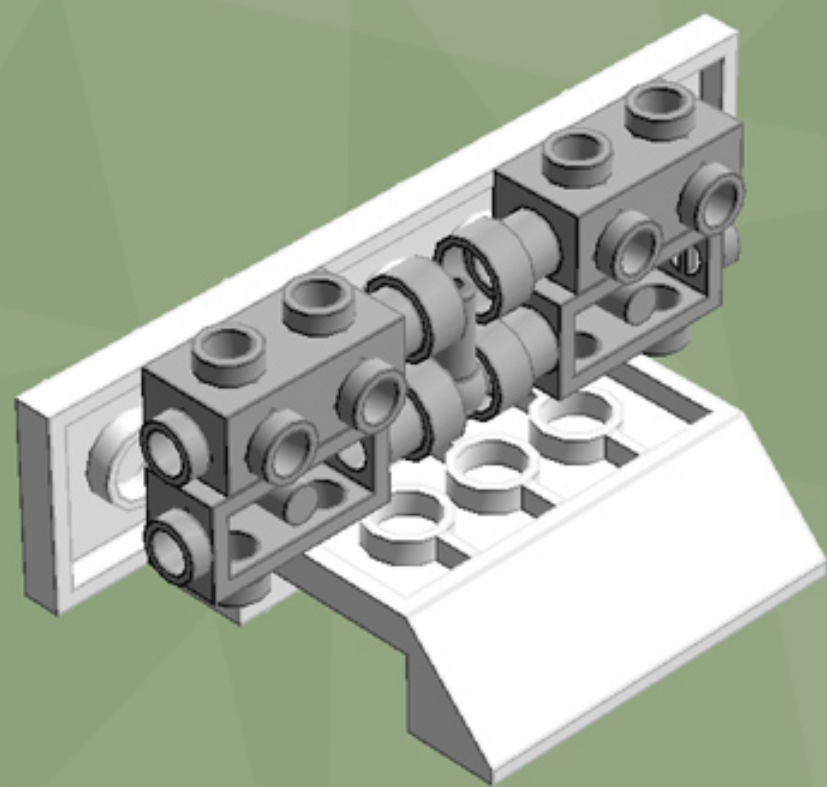
**2x**

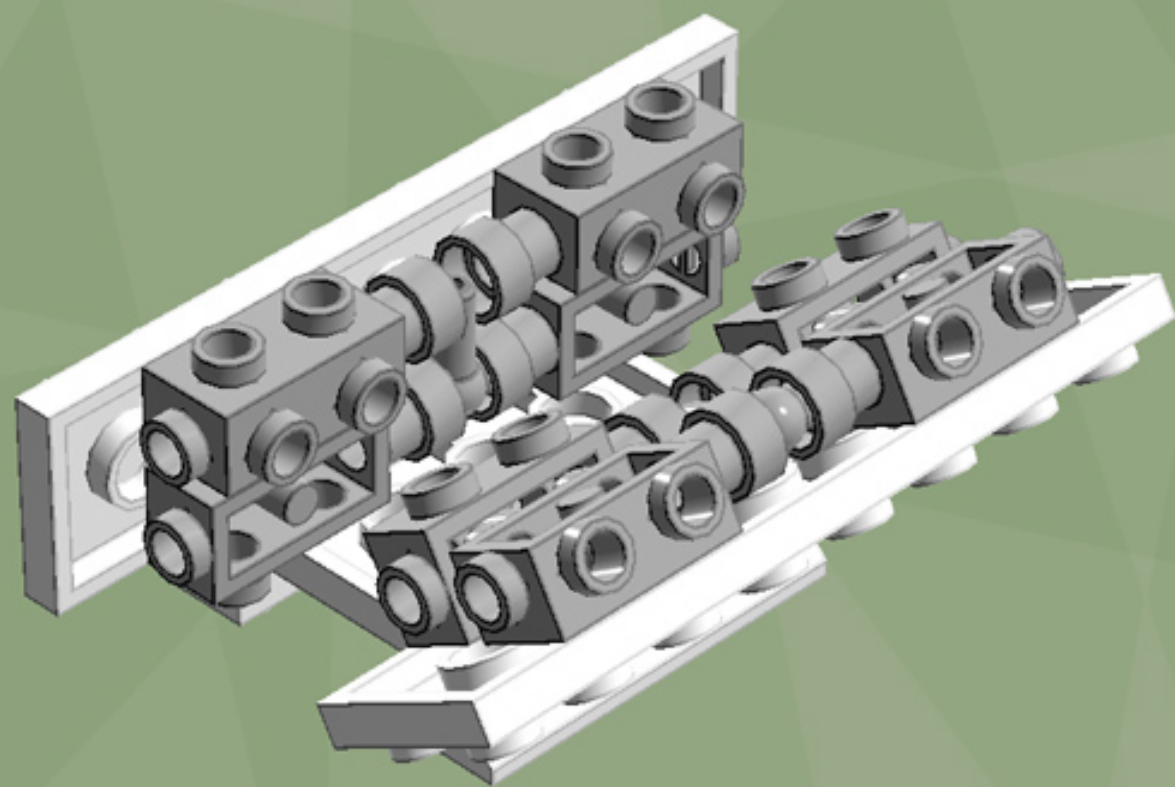


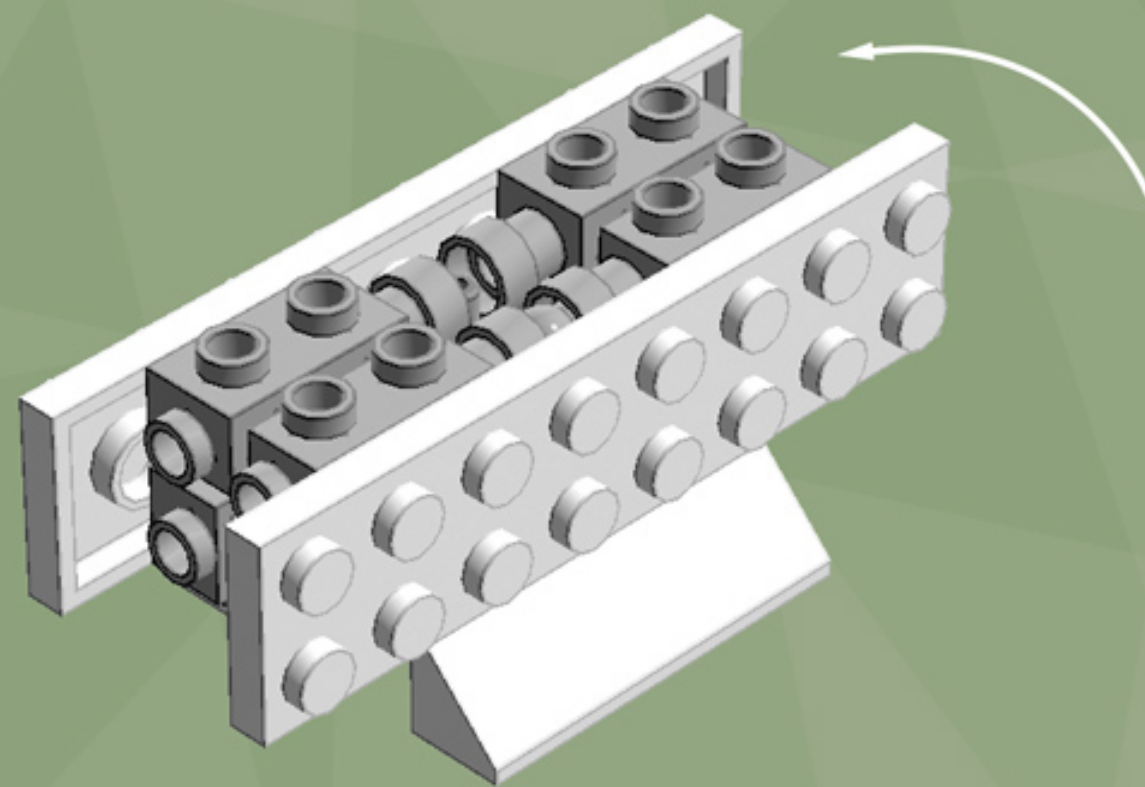


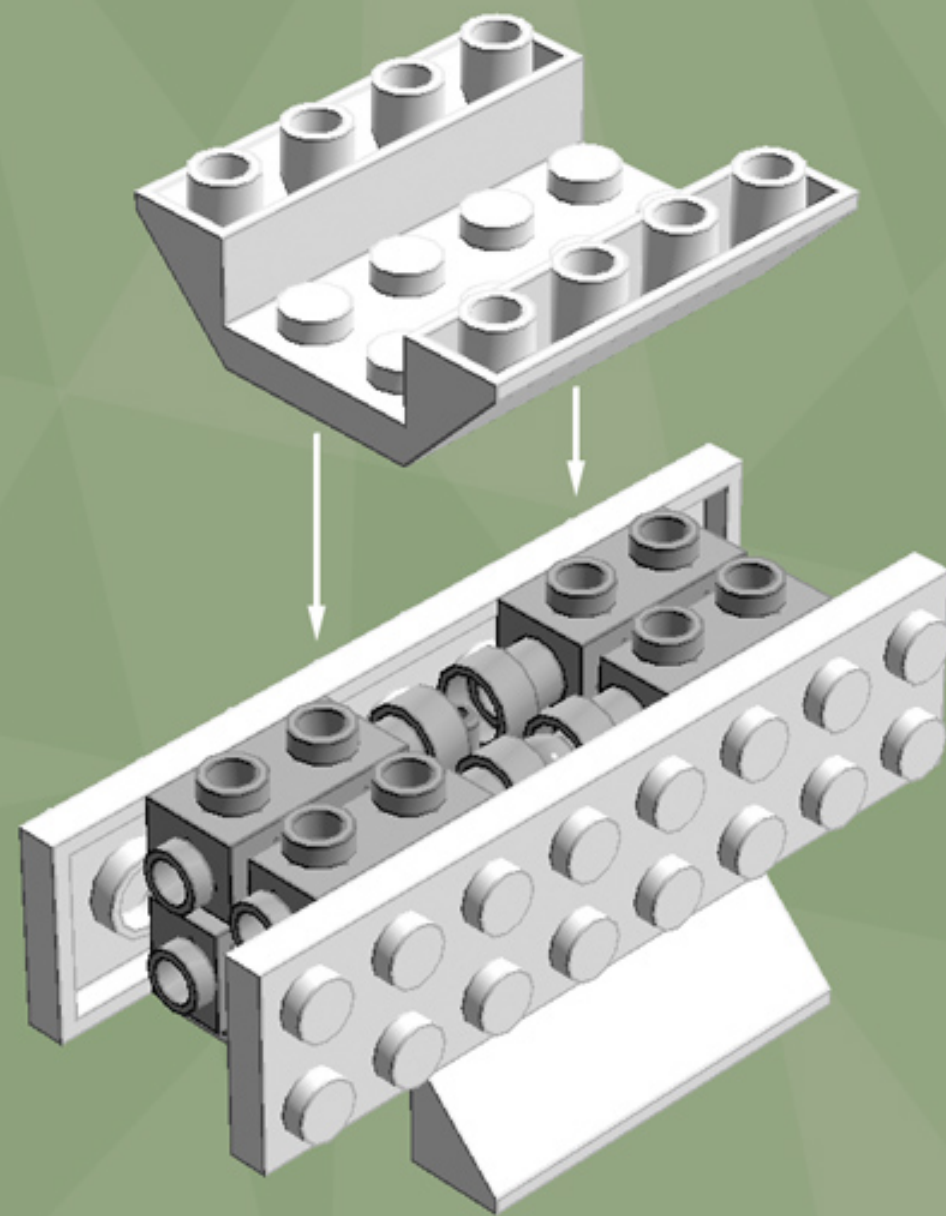


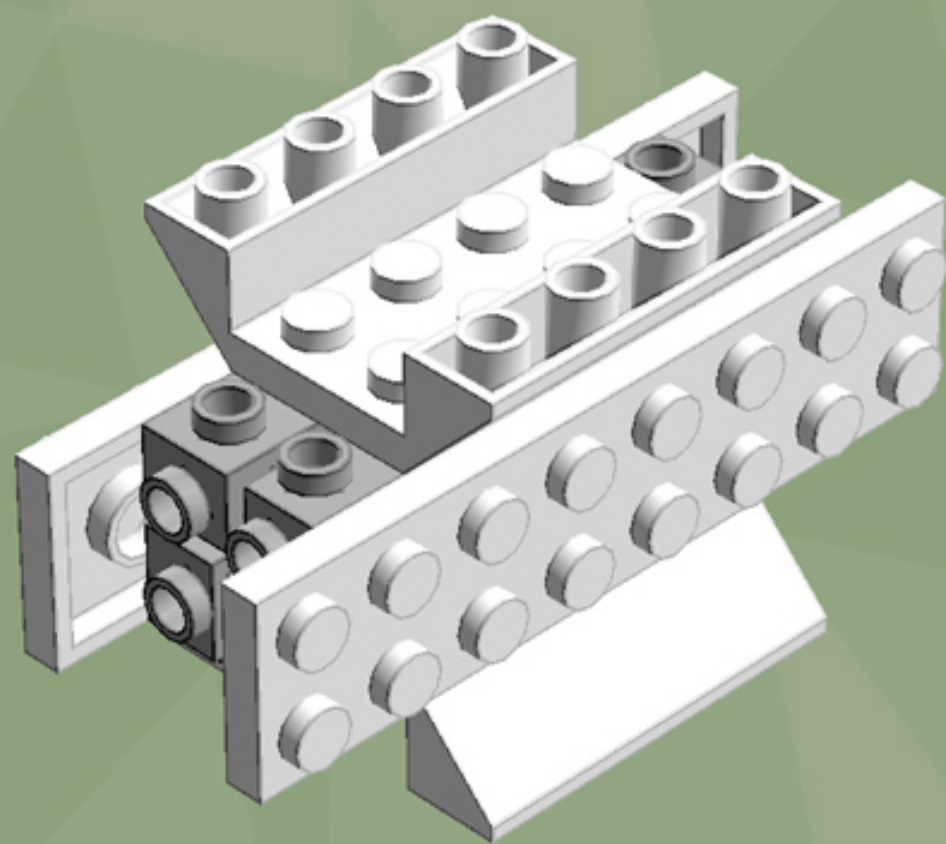




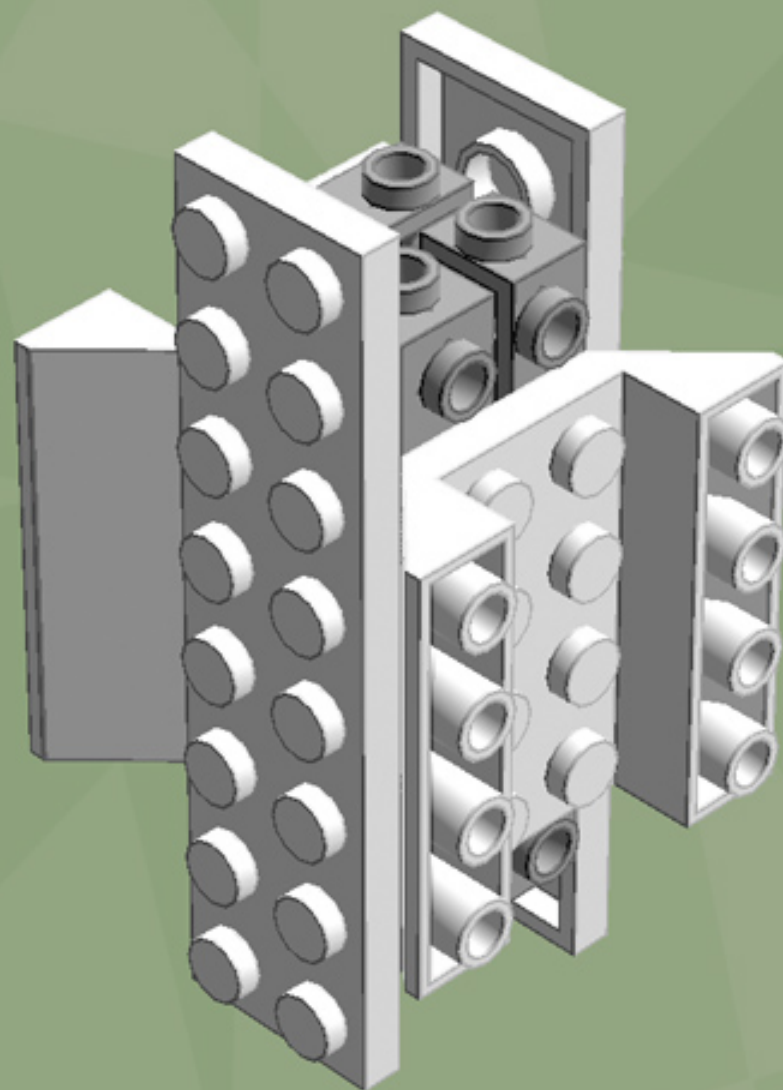


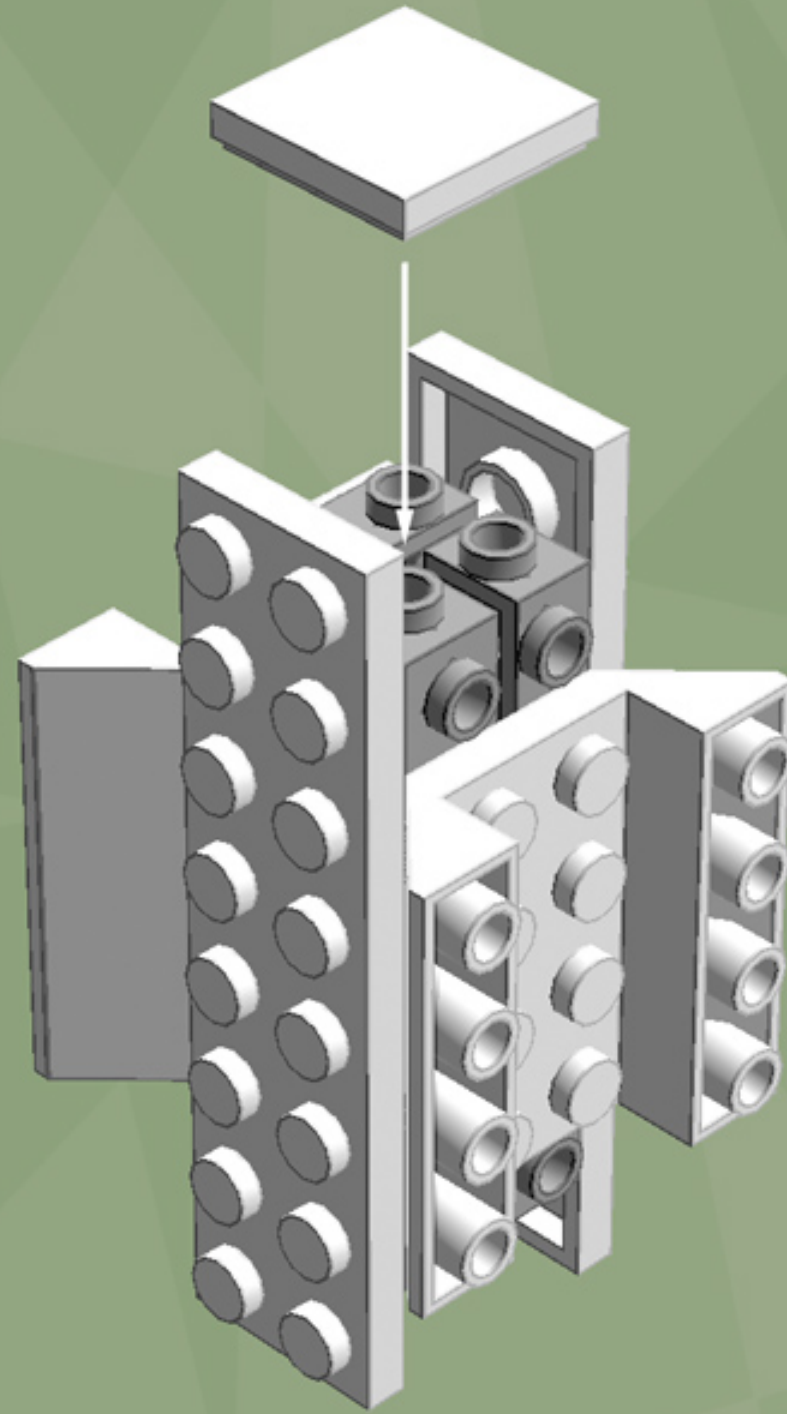


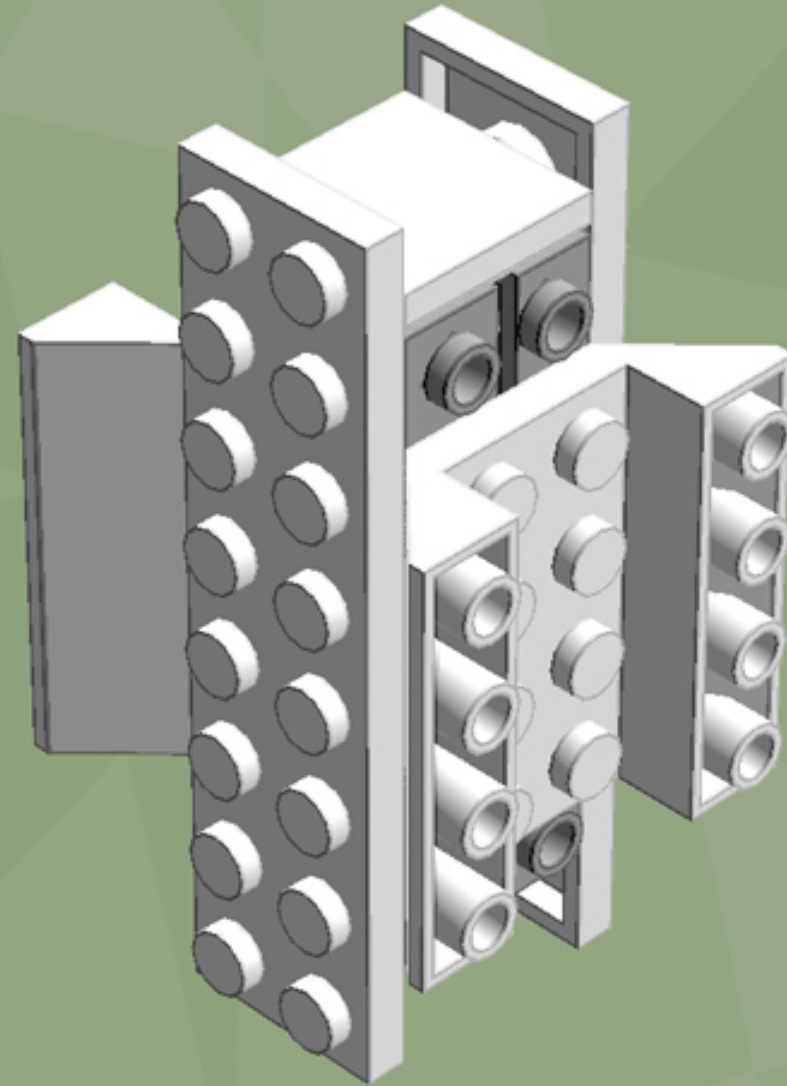


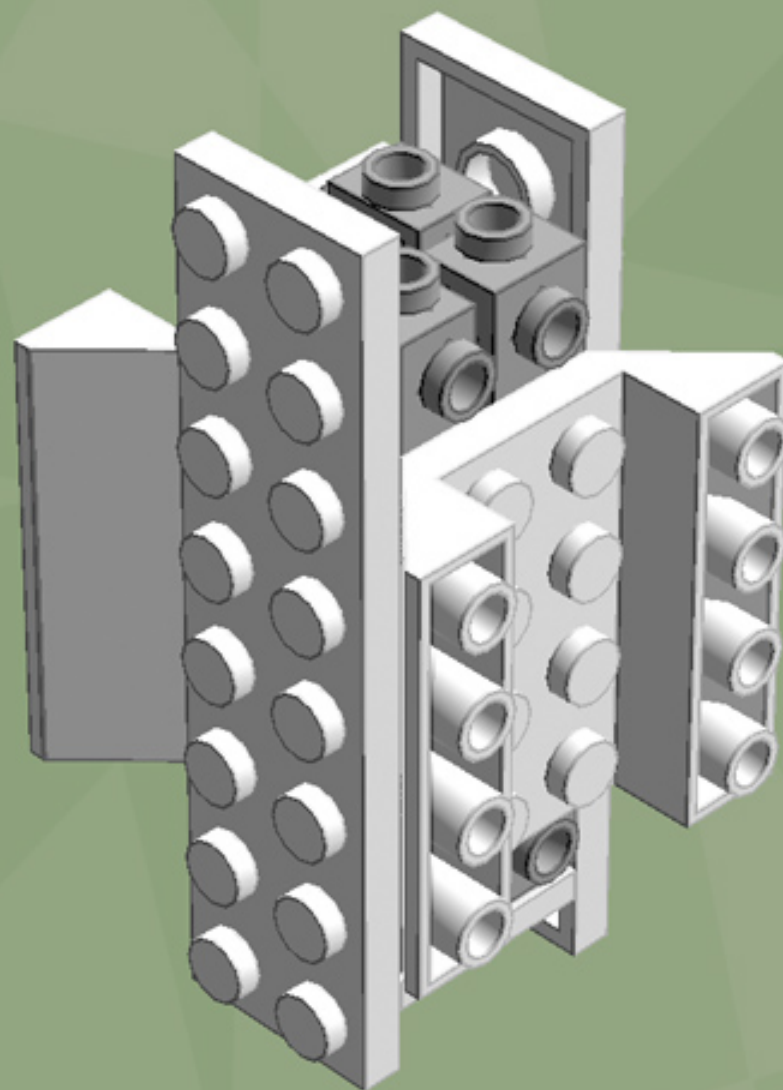


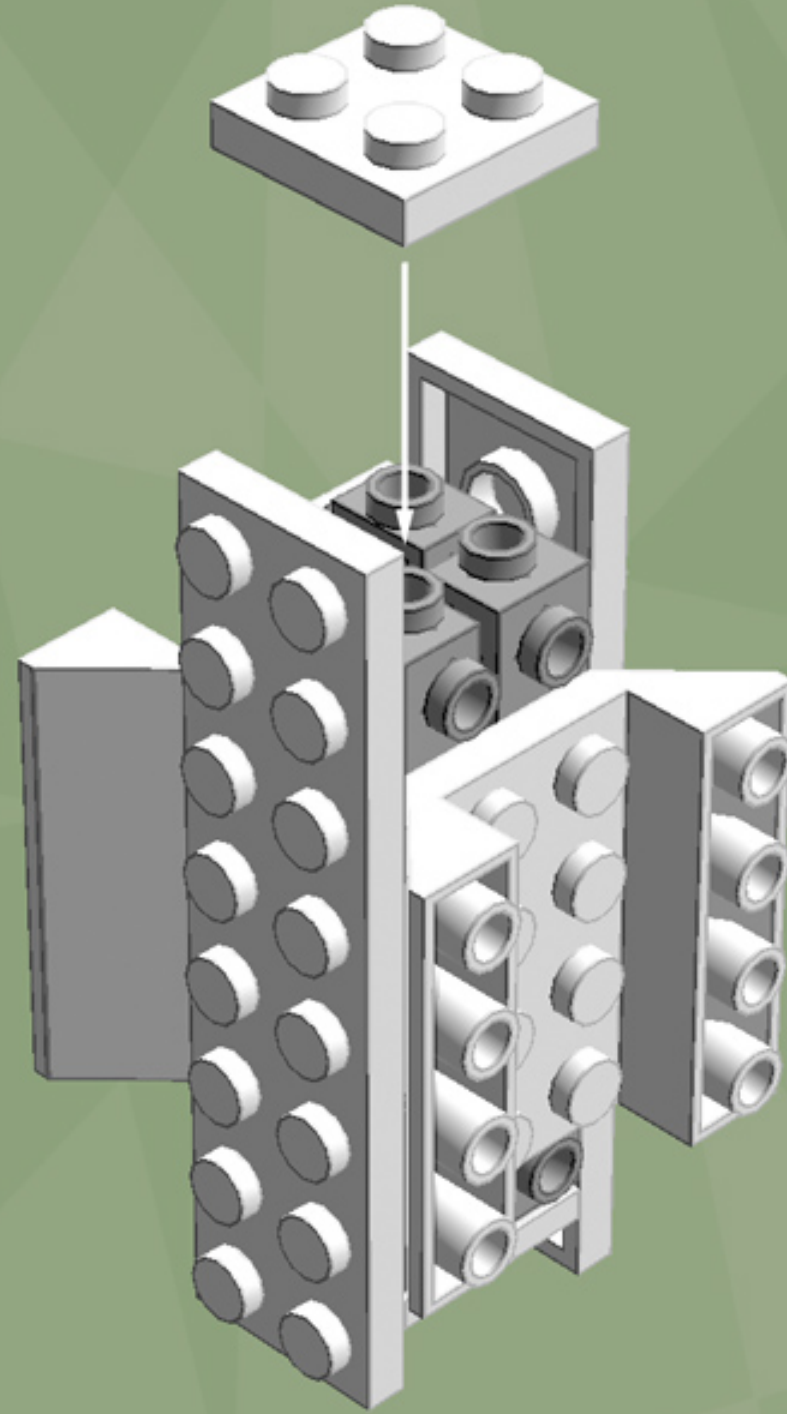




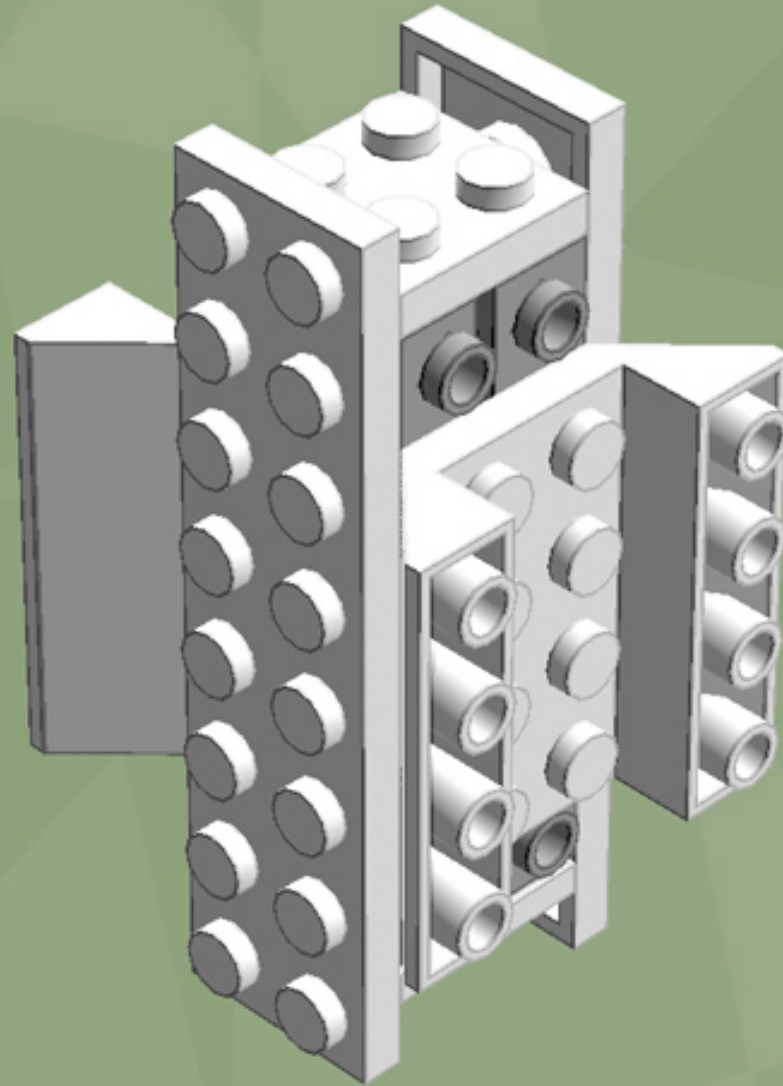


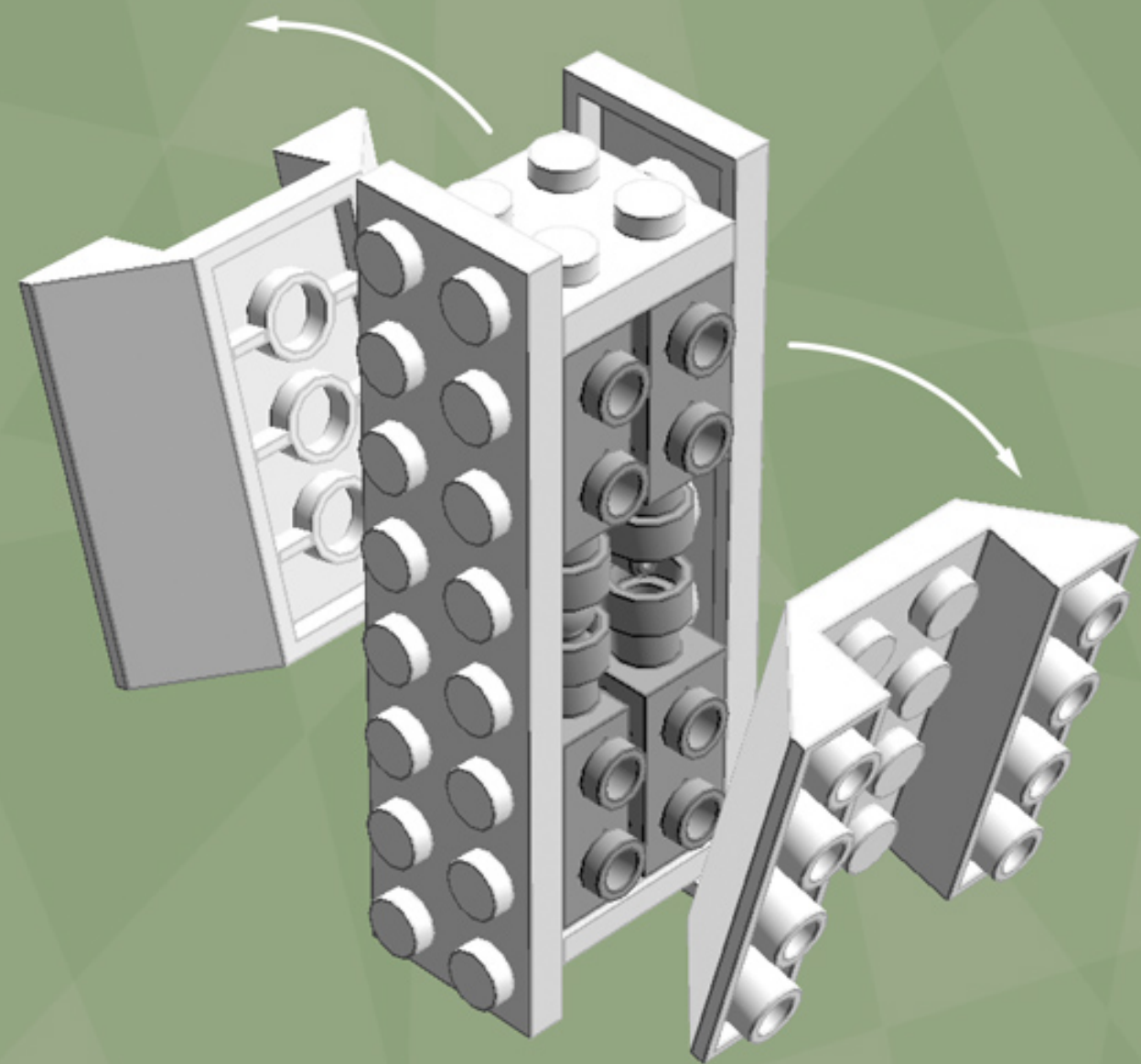


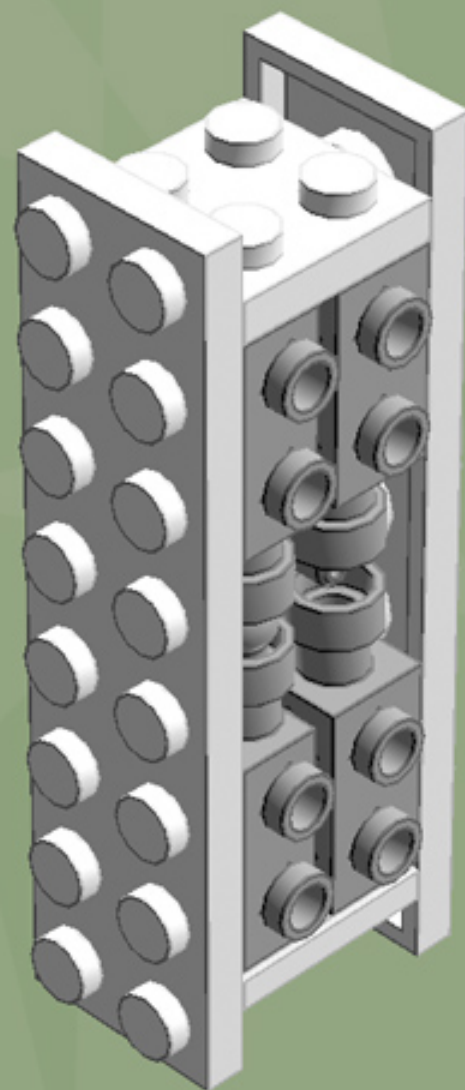


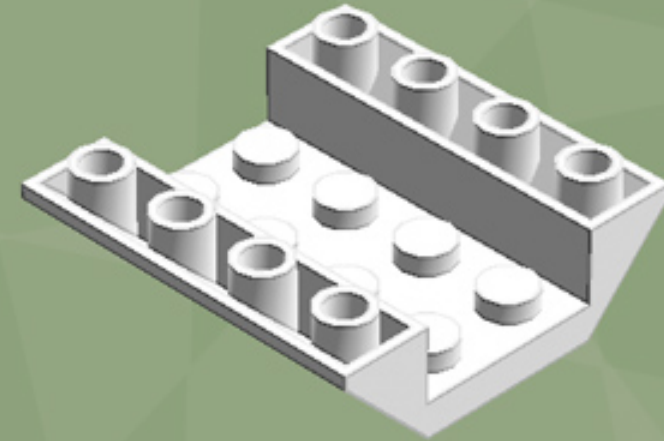


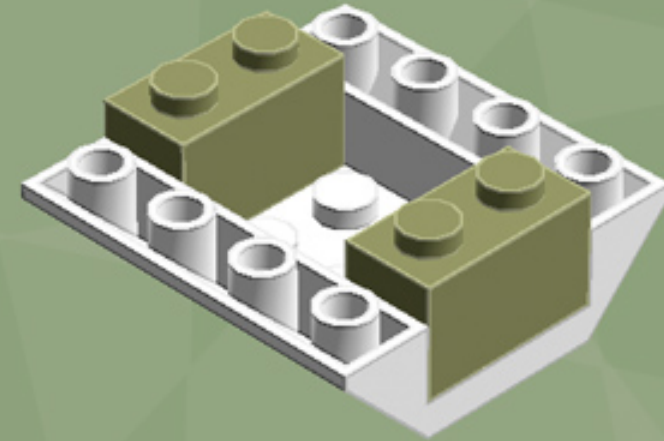




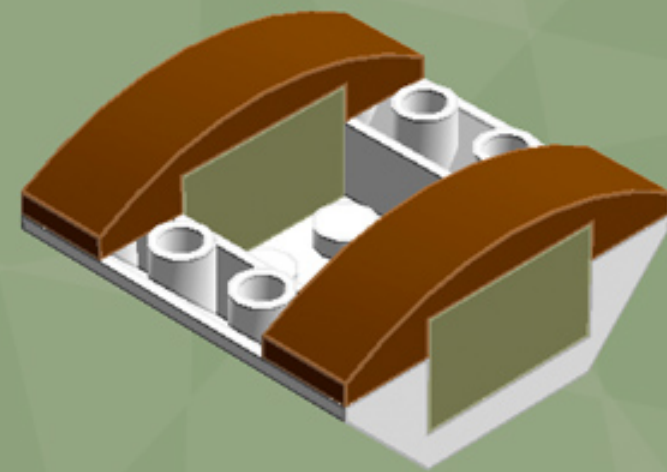


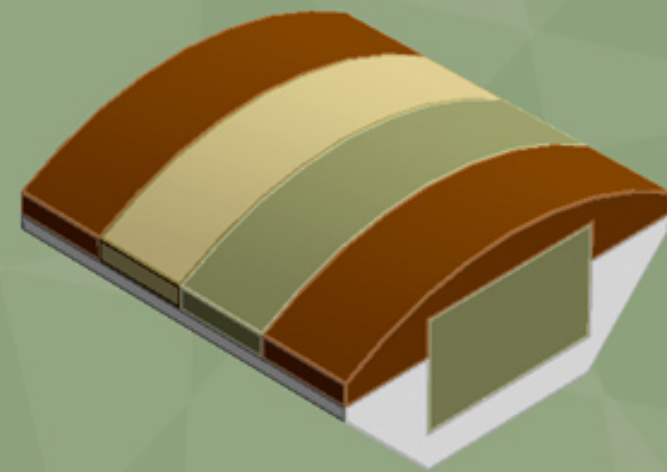




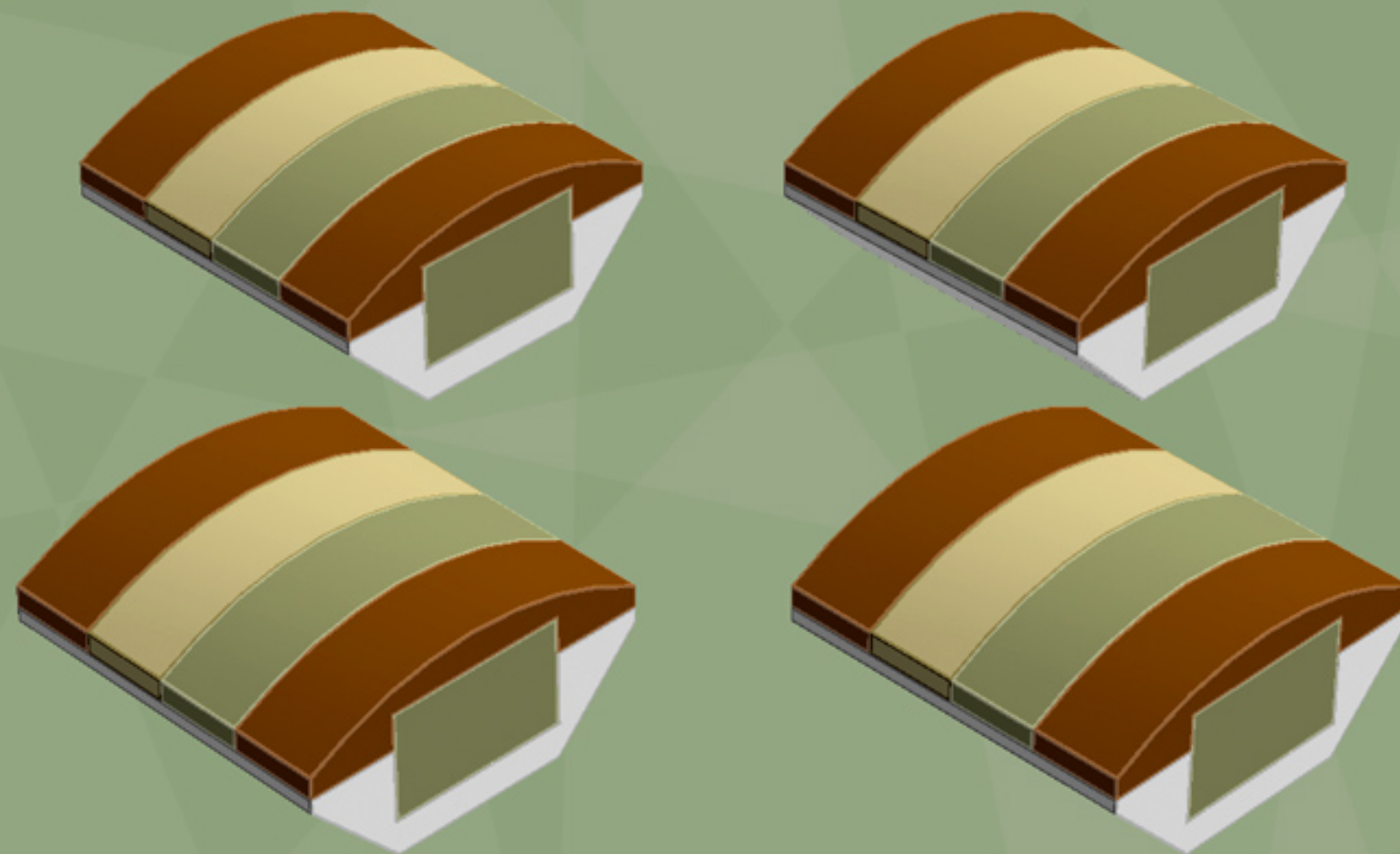


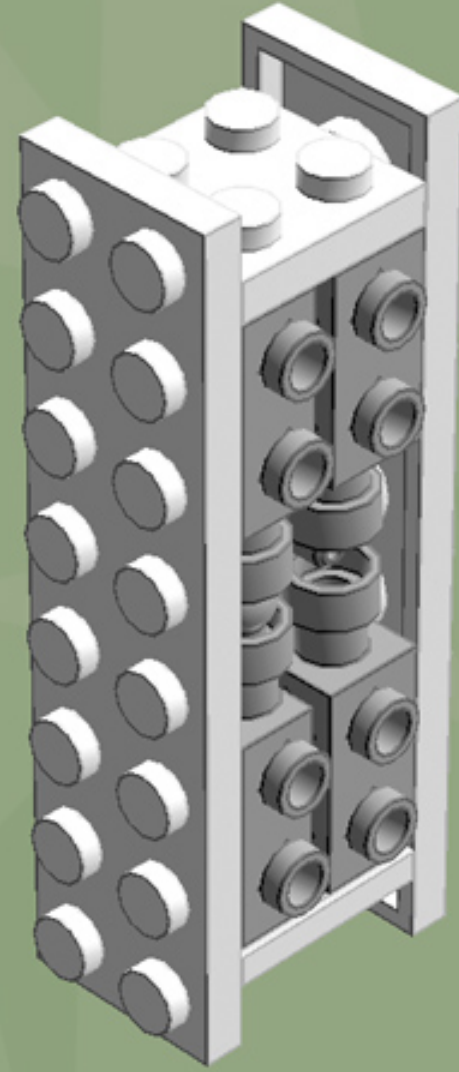


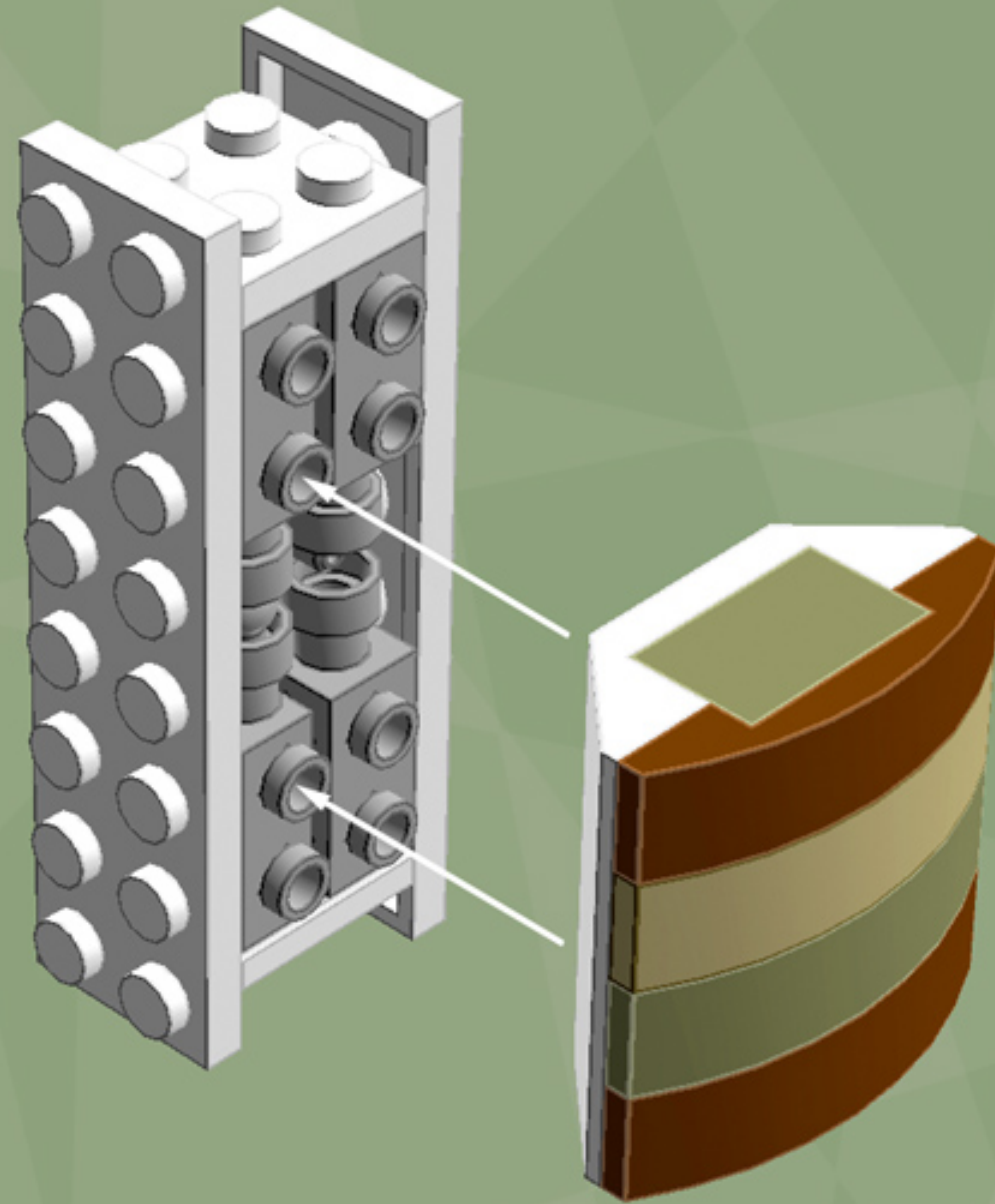




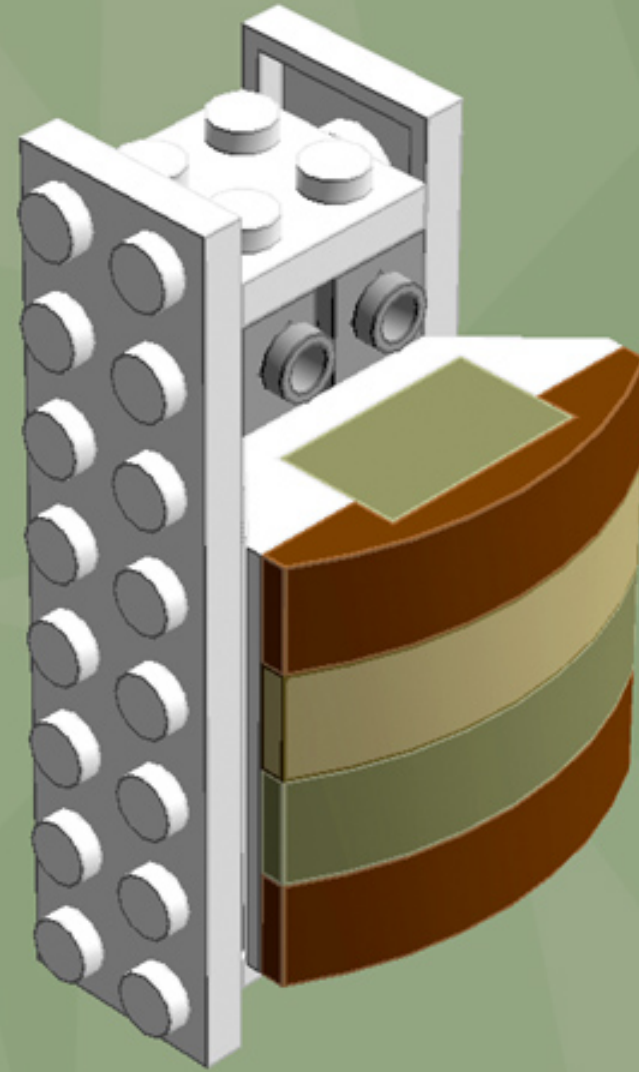
4x

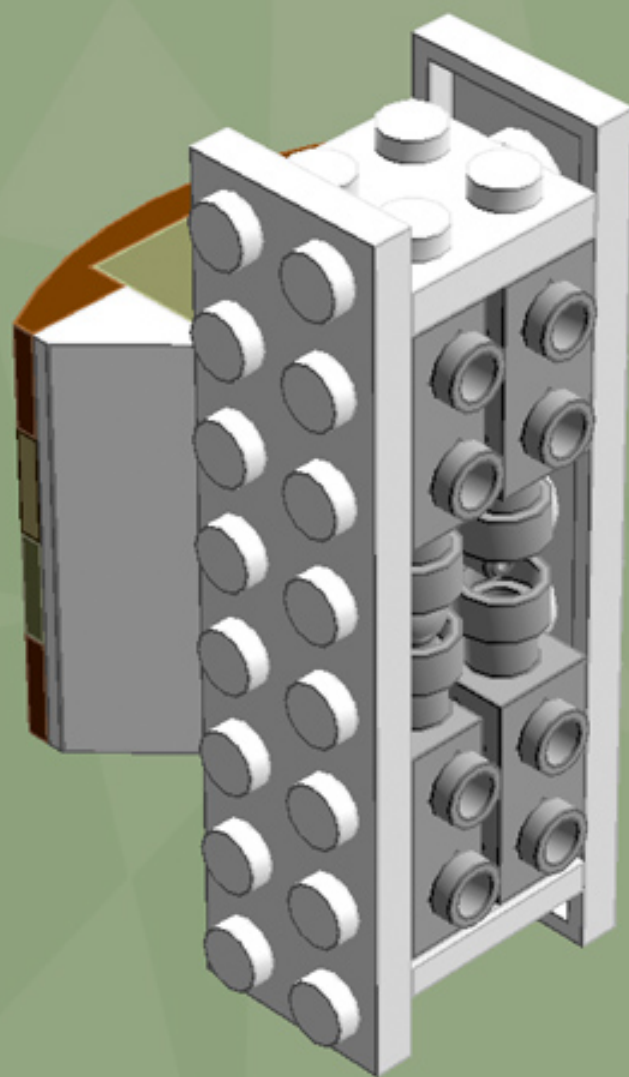


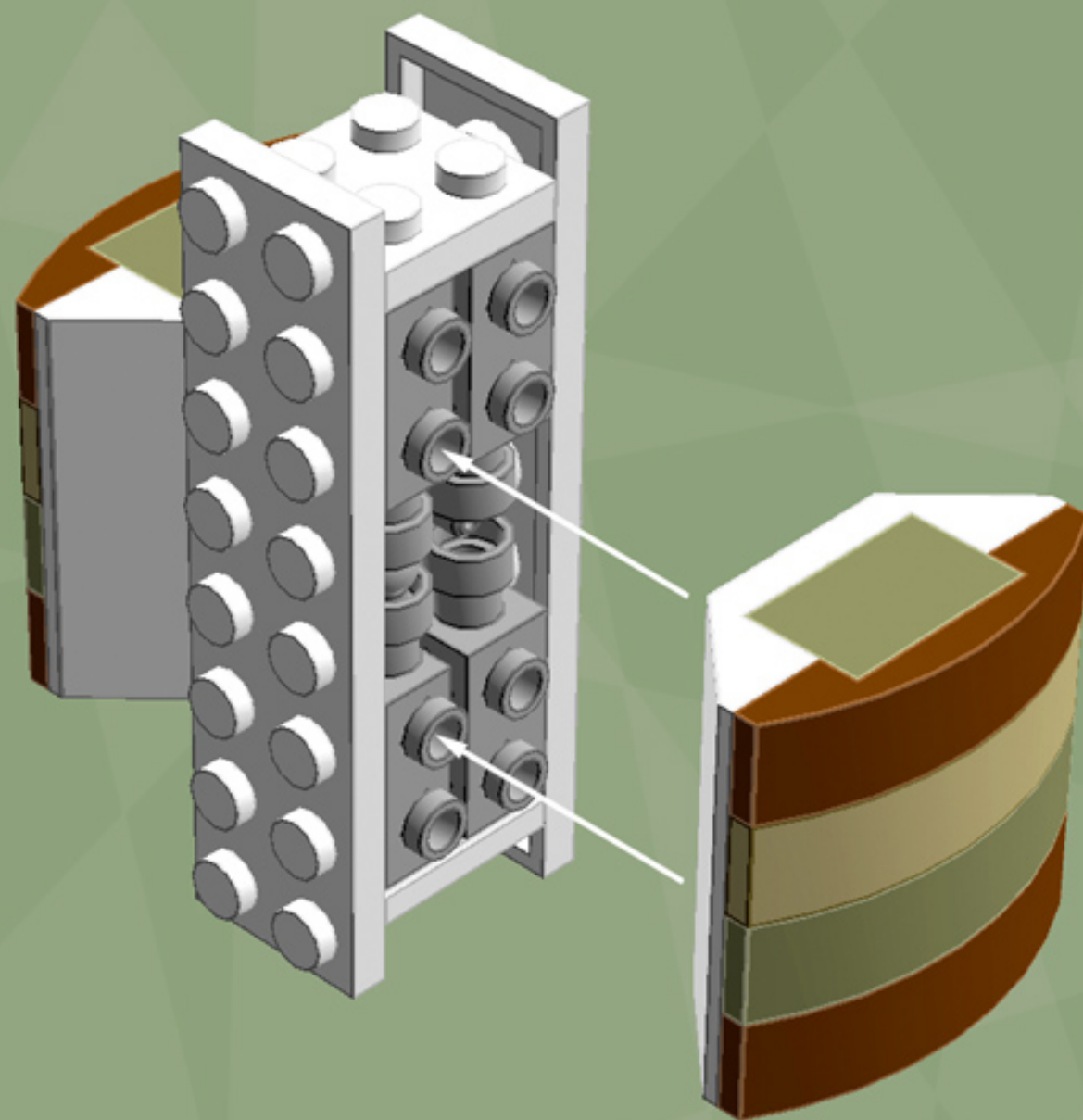


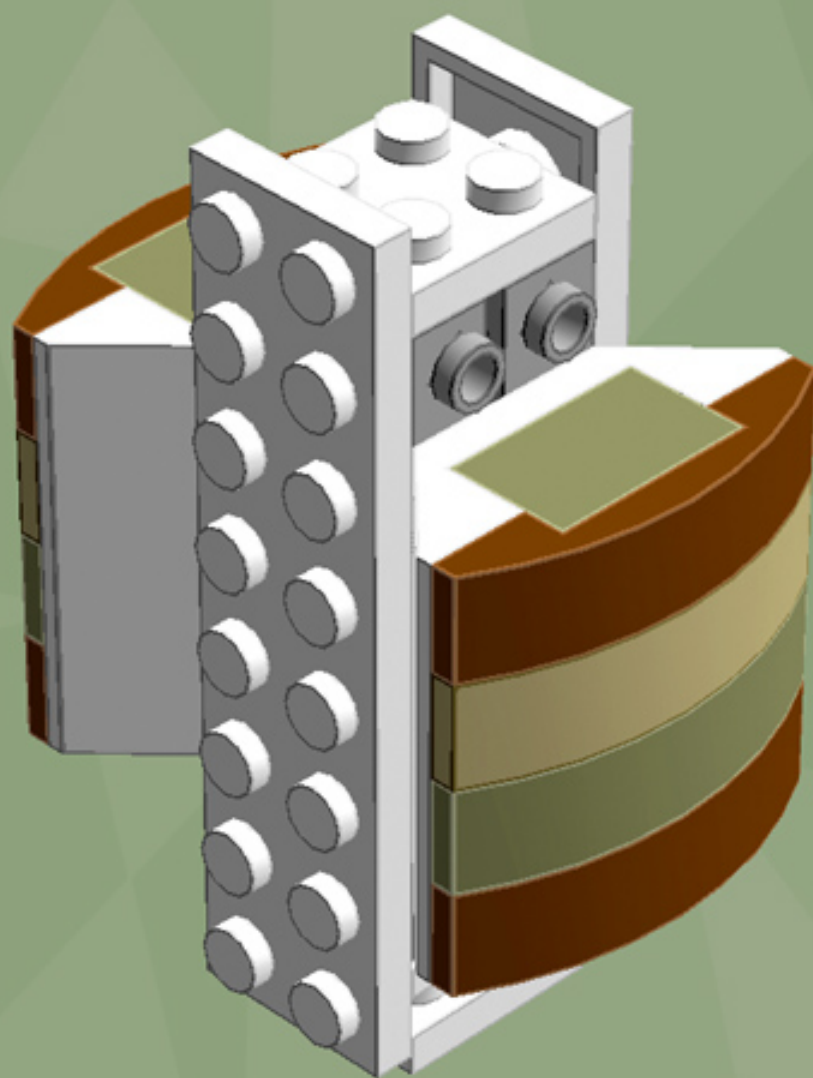


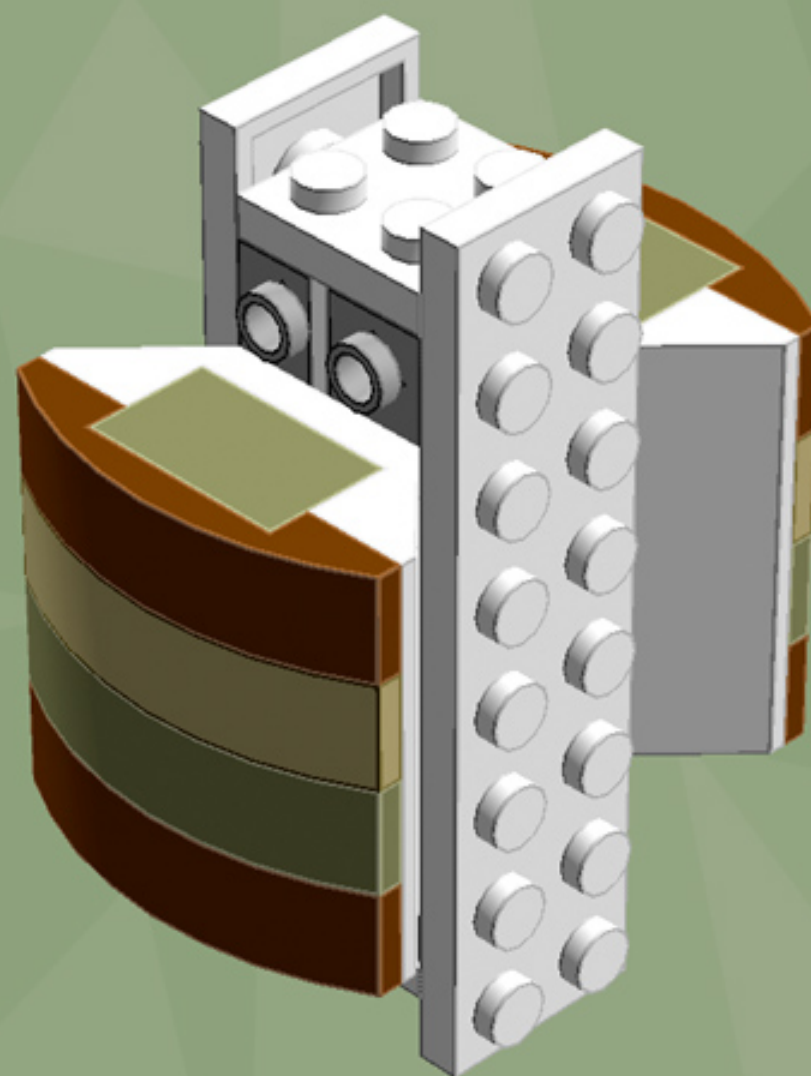


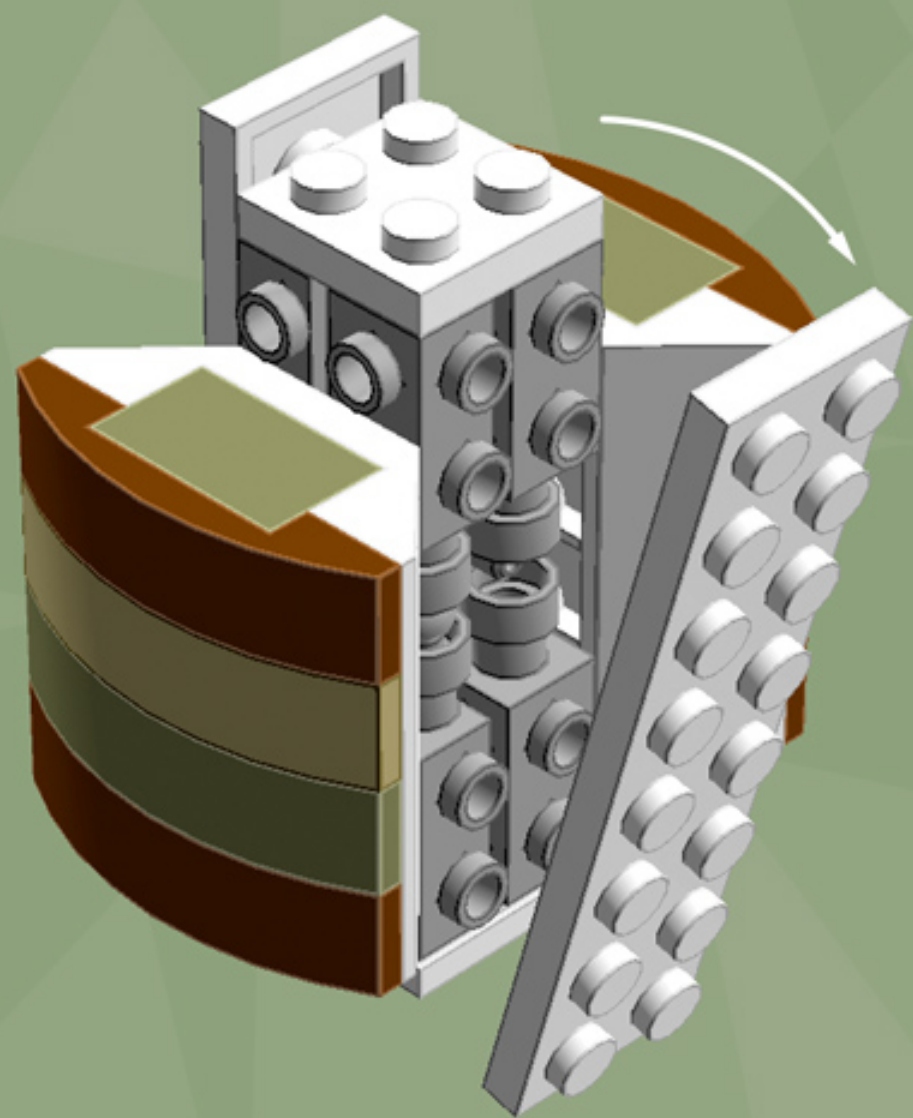




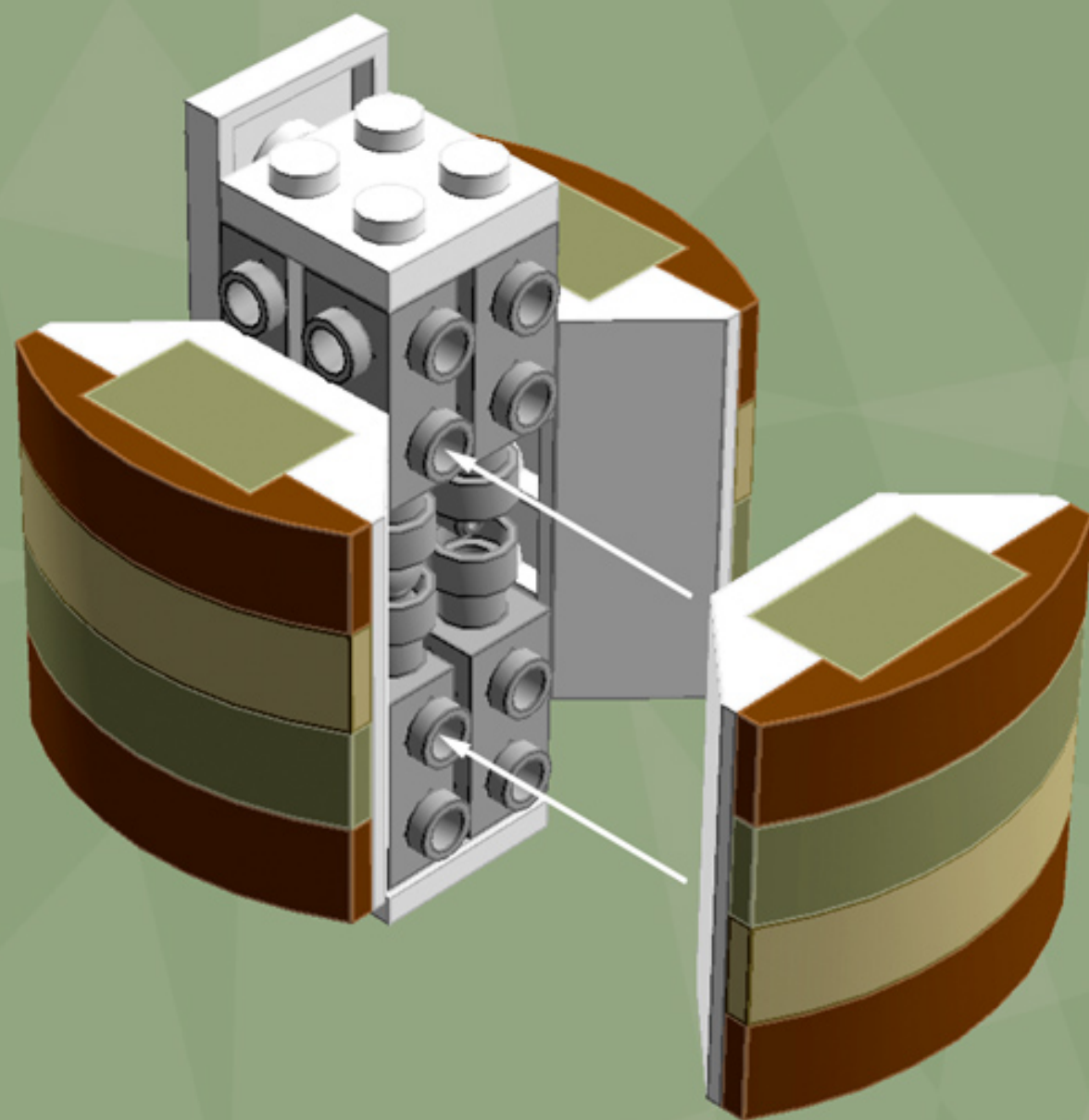


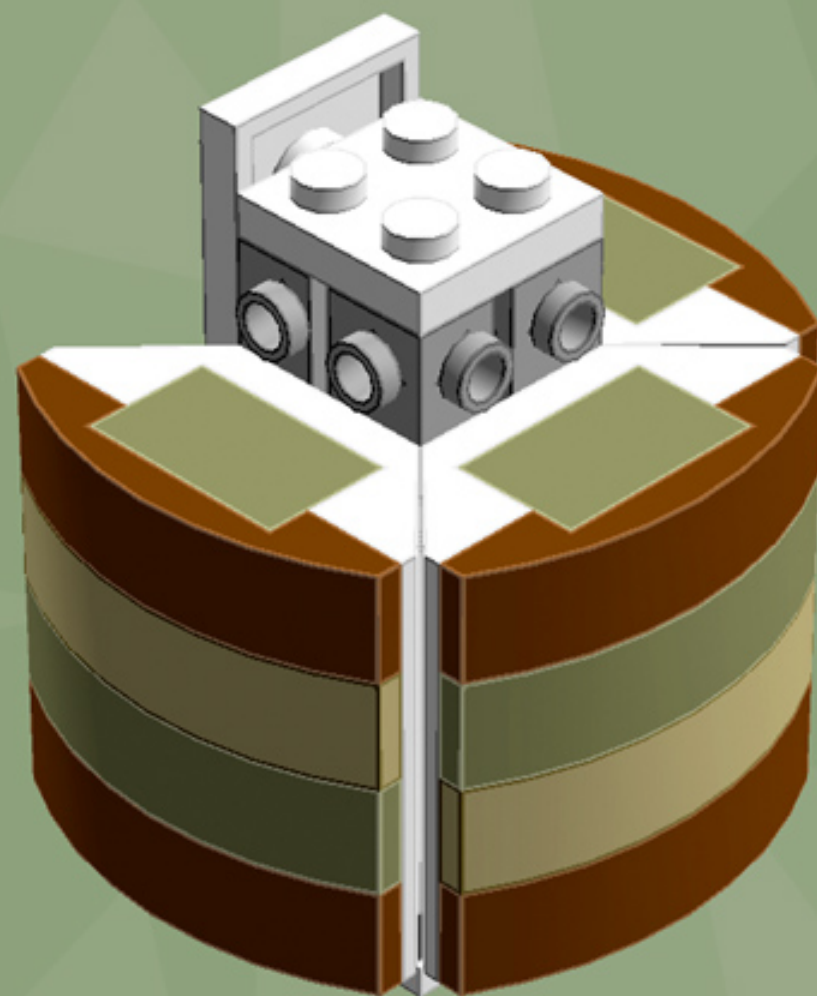


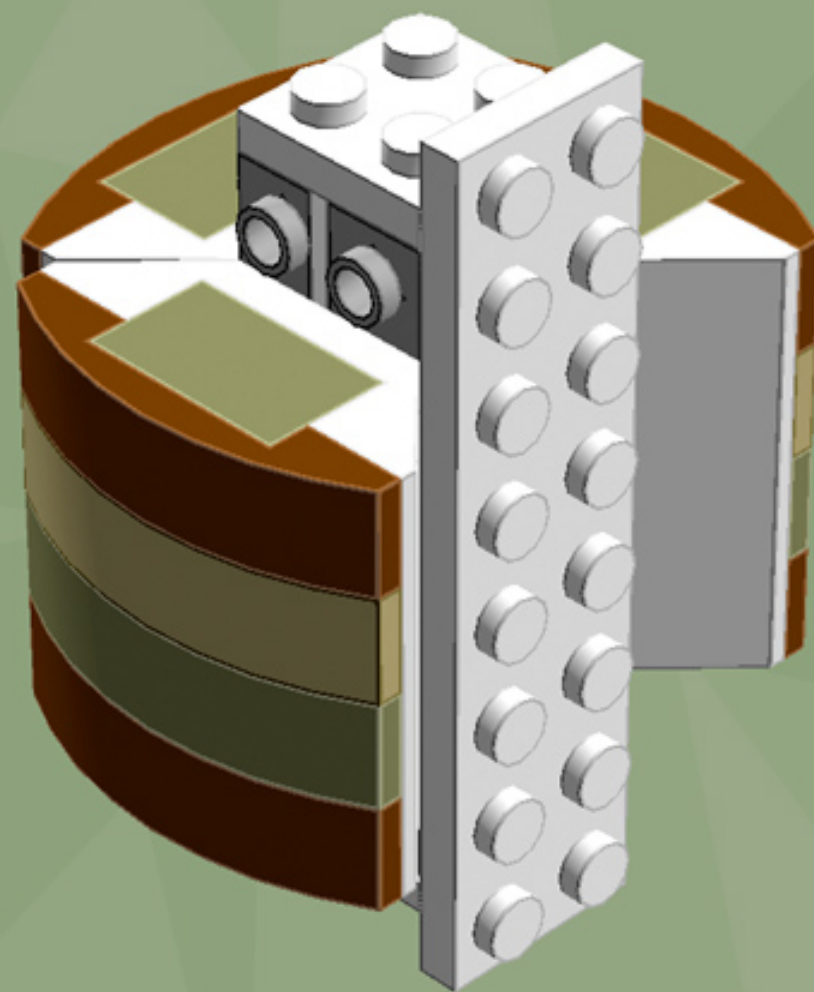


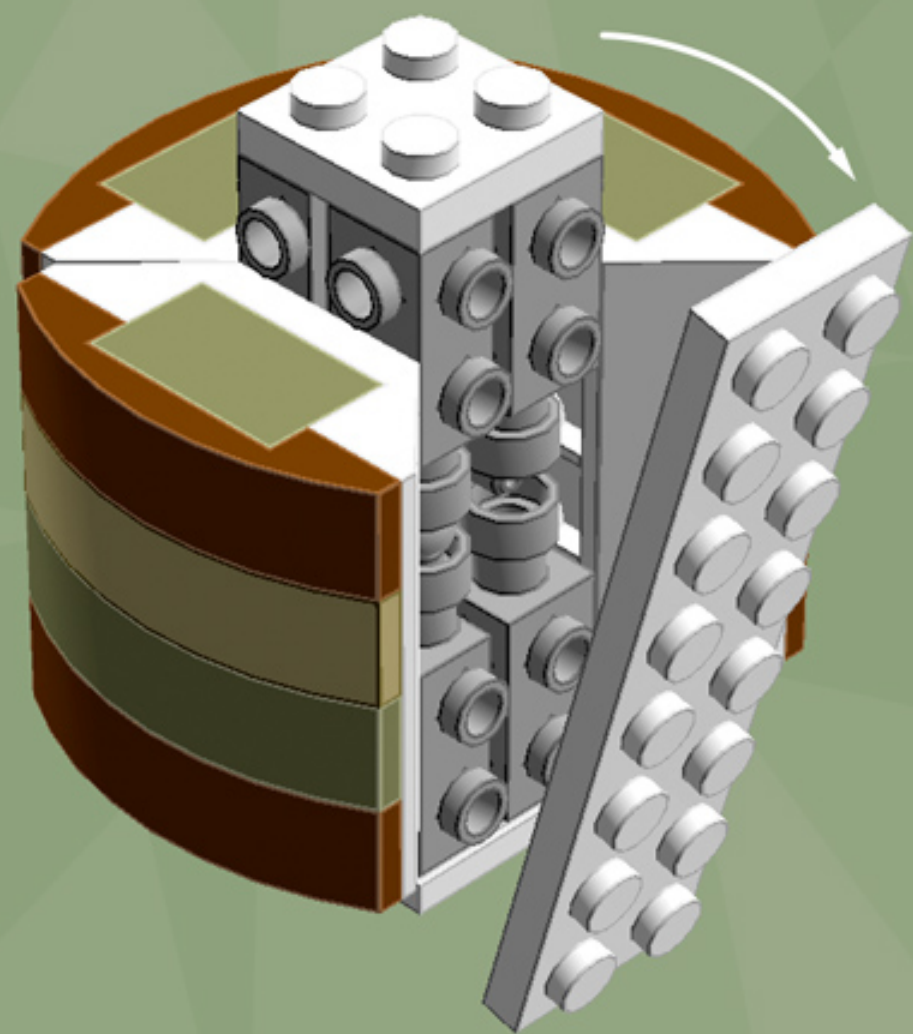


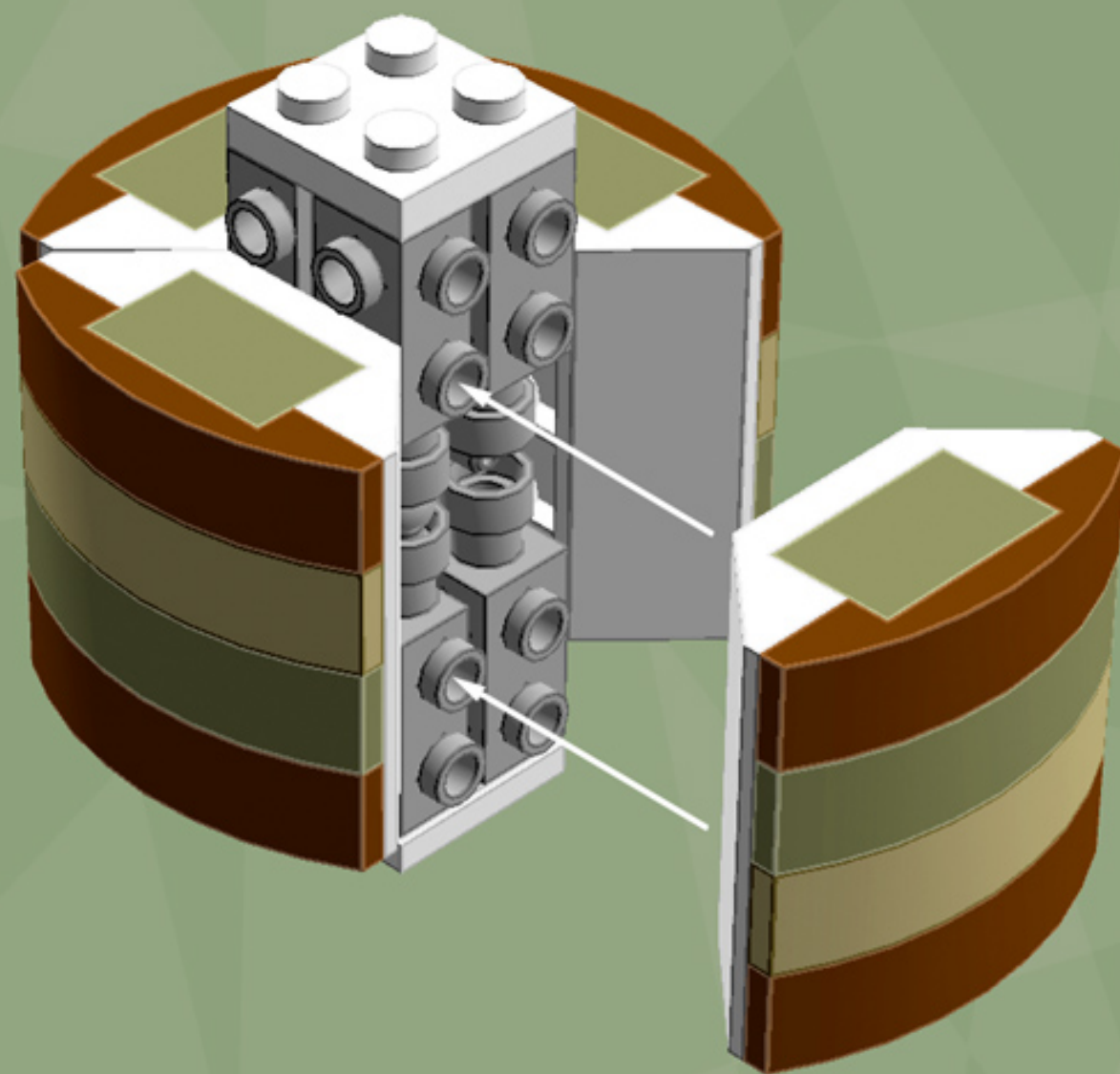




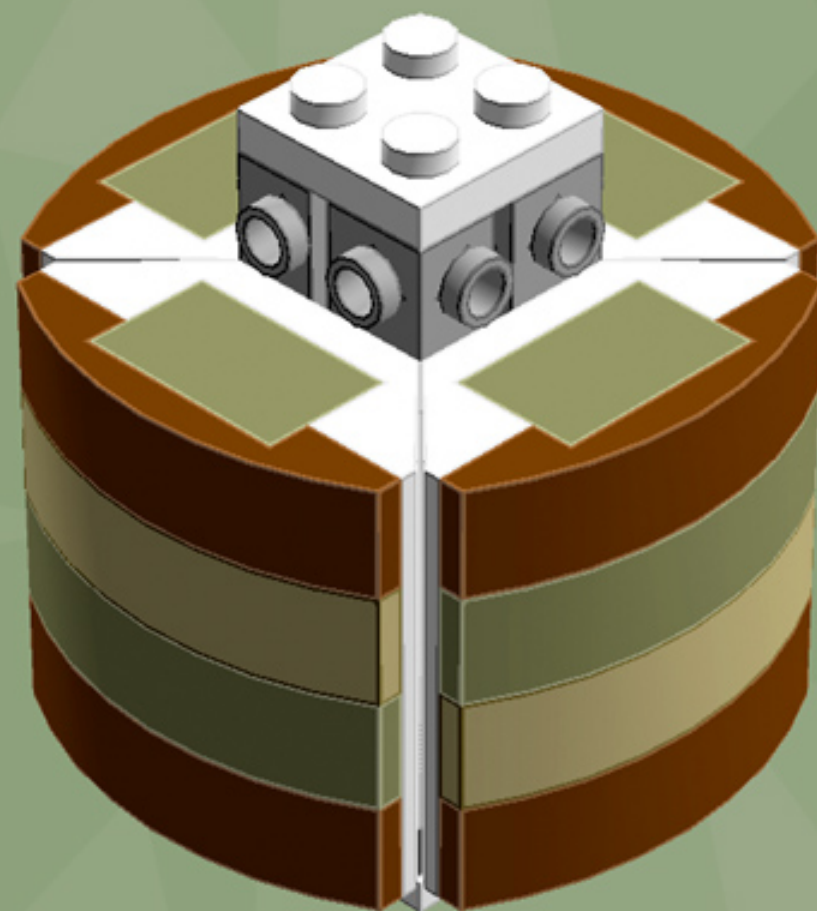




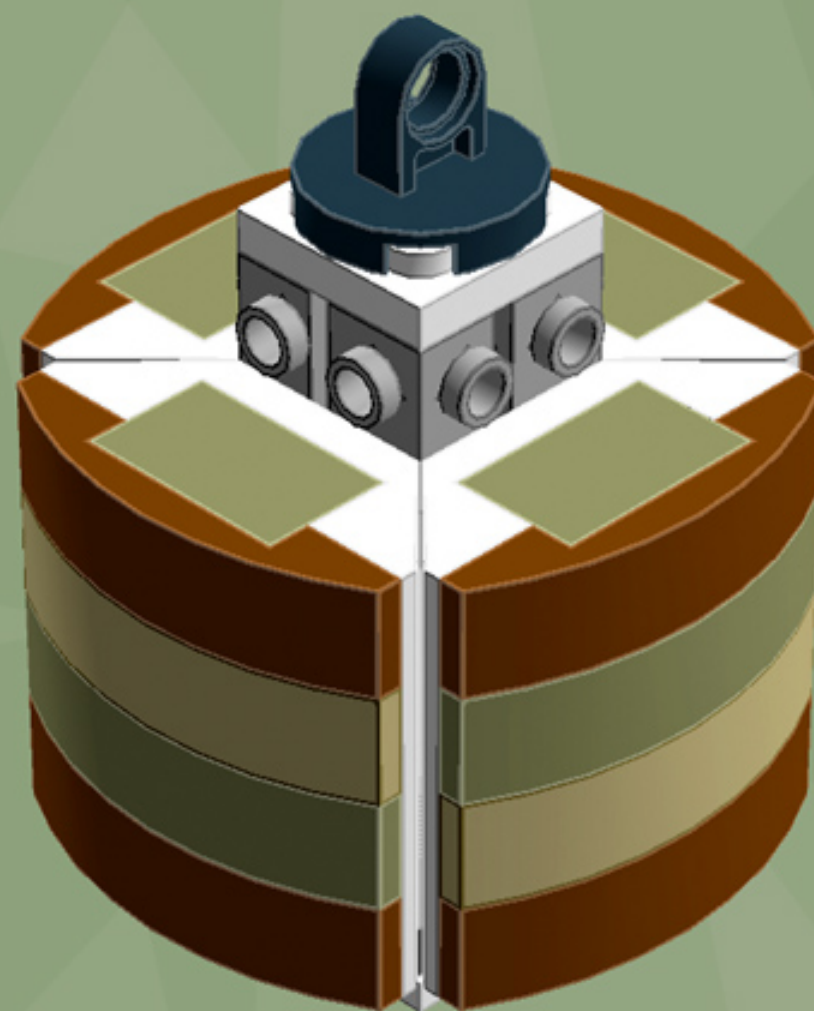


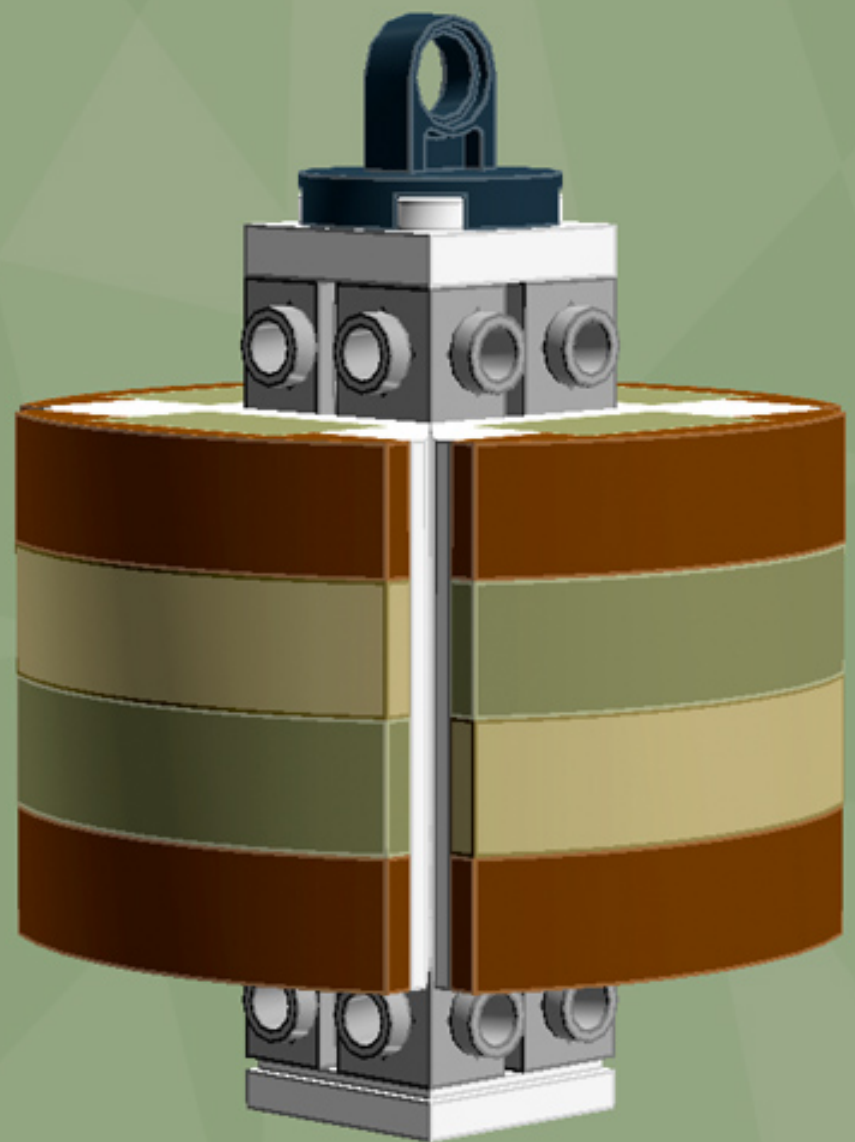


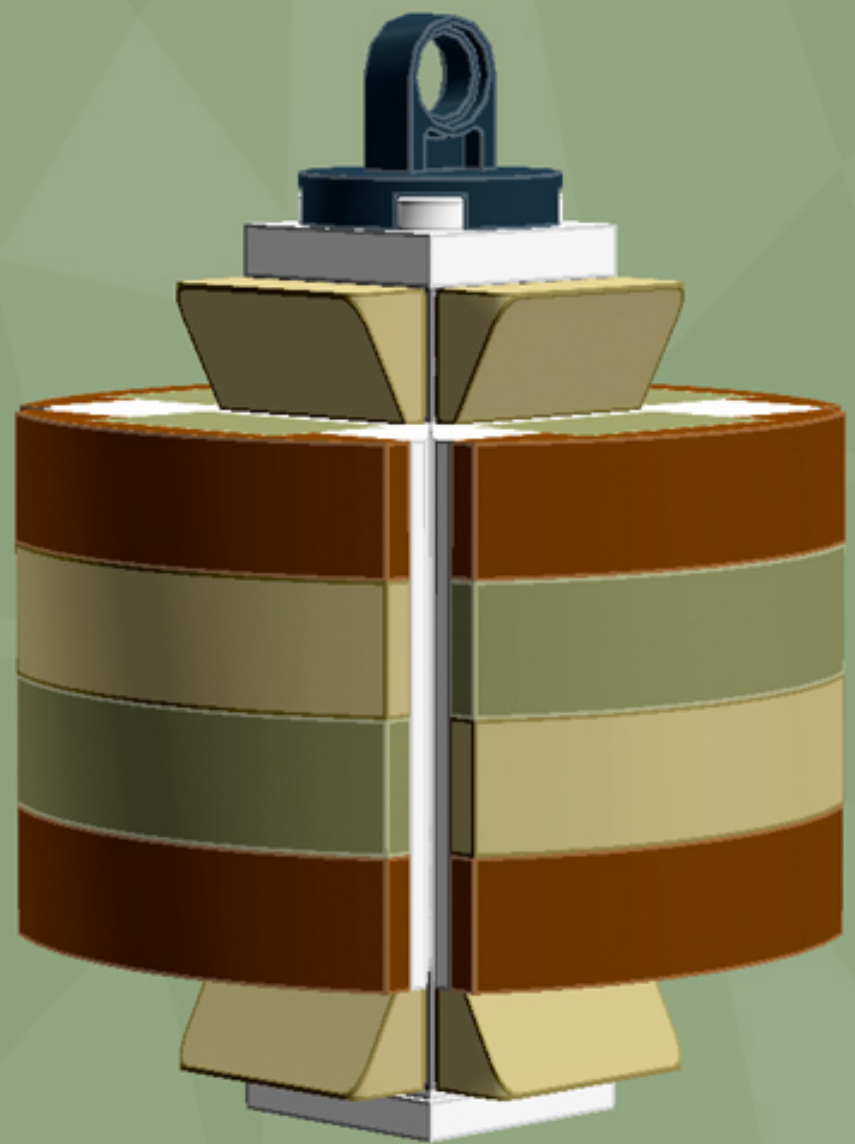


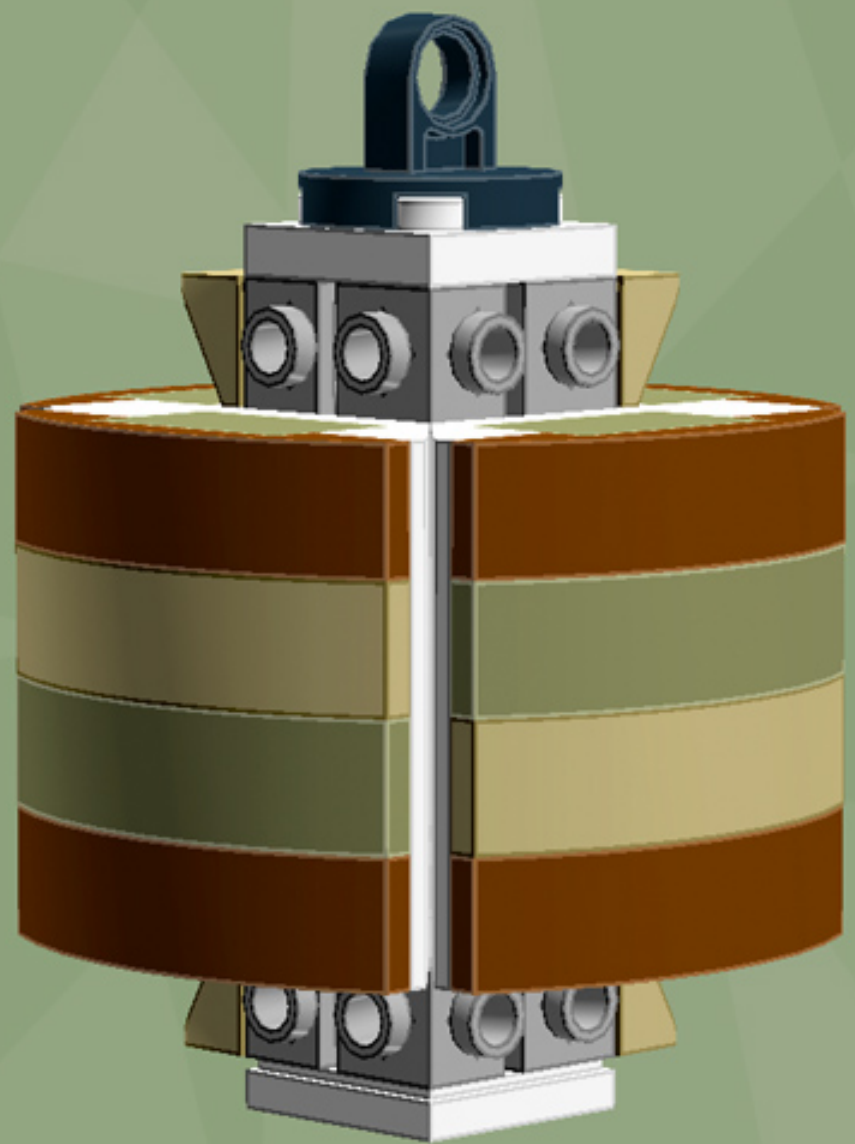


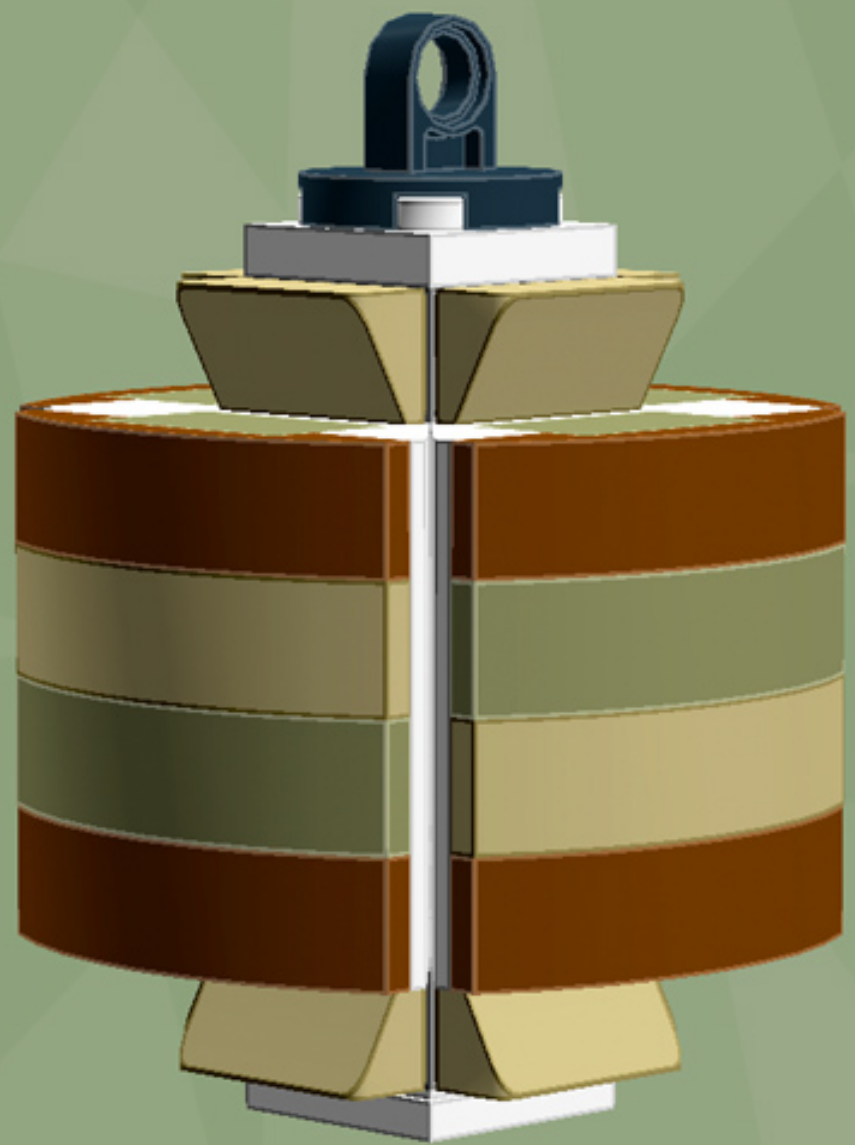


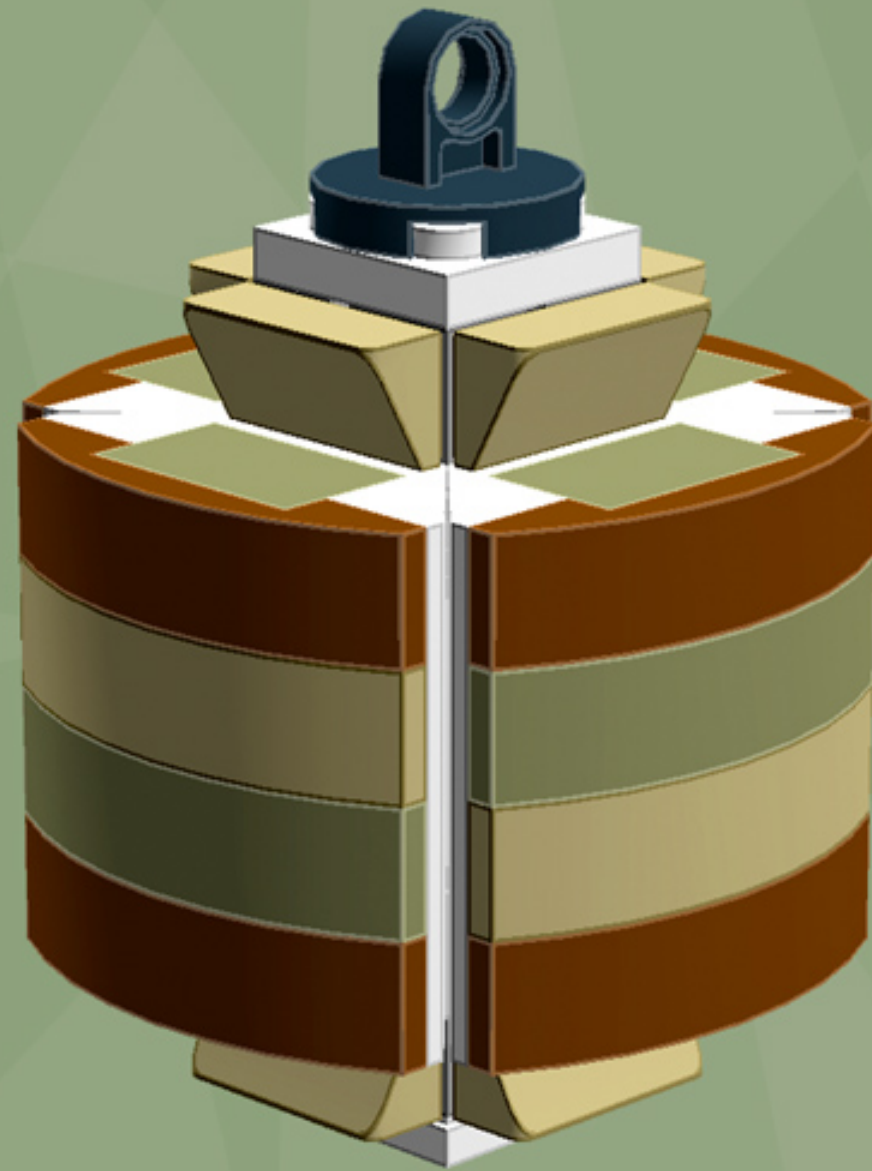














*For more fun builds,  
please pop by [chrismcveigh.com](http://chrismcveigh.com),  
visit me at [facebook.com/c.mcveigh.photos](https://facebook.com/c.mcveigh.photos),  
or follow me on twitter @actionfigured*

*Purchase custom building kits at [powerpig.storenvy.com](http://powerpig.storenvy.com)*

*These building guides are for personal use only. Unauthorized duplication, distribution and/or modification of these guides, in whole or in part, is strictly prohibited. The models contained within these guides are the copyright of Chris McVeigh, unless otherwise stated. Unauthorized reproduction of these models for resale, either in whole or as a building kit, is strictly prohibited.*

*© 2014 CHRIS MCVEIGH*

*LEGO is a registered trademark of The LEGO Group.*